



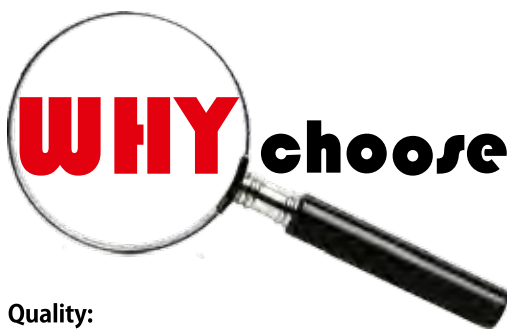
Now you can see!

COMPANY PROFILE



Provision-isr, an Israeli brand, was created to answer the need for reliable high quality CCTV middle level range products at competitive price alongside professional after sales support and strong marketing, all from a company who understand the business of CCTV.

Quality products are assured from a team of expert Israeli engineers which start from the components sourcing thru the manufacturing QC to the finished product; competitive prices are the result of our own production plant in china. Today, provision-isr is a fast growing company with official exclusive distributors in many countries around the world working as partners to promote the brand in their regions and developing new designs and technologies with the supreme guidelines of high quality and competitive prices.



WHY choose PROVISION-ISR?

Quality:

As a branded products we must keep our reputation of quality products by using the best components and strict quality control standards by our Israeli engineers.

2 year warranty:

Our low RMA rate allow us to support our clients with long warranty and we have found creative ways to deal with your RMA service.

One stop shop:

Due to our vision of creating a one stop shop to our clients for the entire range of CCTV products, we have managed to create a full range of CCTV accessories for all types of CCTV installation.

We perfectly understand the need for tested and reliable CCTV accessories and set high quality standards to these products as well.

Technical support:

Our Israeli technical support staff is here to attend any technical demand to all CCTV and it questions.

Marketing assistance :

International and national exhibitions, graphic designers, marketing materials, seminars to your staff and more are only part of our way to promote your business with Provision-isr.

Business of CCTV:

We understand the installer need as well as the distributor needs, we can find creative ways to deal with any demand from the market. We speak fluently the language of CCTV and security and we are here to establish reliable and confidante business relation with you.

Call us today to learn more about...



CONTENT

P 01-07 Ultravision Cameras



P 08-13 Effio-E Cameras



P 14-19 Box Cameras



P 20-29 Dome Cameras



P 30-38 Infra Red Cameras



P 39-42 Led Array Cameras



P 43-47 ASF Cameras



P 48-60 Hidden Cameras



P 62-70 PTZ Cameras



P 71-76 Lenses



P 77-88 DVR's



P 89-92 Accessories



CONTENT

ULTRA VISION WDR CAMERA Series



Source

our latest collection of cameras, which features our newest DSP chipset.

This component integrates breakthrough technologies, such as extended dynamic range, enhanced low light sensitivity, super high resolution, advanced 3D-DNR, image stabilizer and enables clear and accurate image capturing.

The benefits of this chipset also include: eclipse function, digital 10X zoom, vertical and horizontal flip, privacy masking, video motion detection and more. All controlled from the OSD menu.

BX-371UV



DI-371UV(VF)



DA-371UV(VF)



DX-371UV(VF)



MC-371UV



P03 PROFESSIONAL BOX CAMERA

P04 VARI-FOCAL DOME CAMERA

P05 ANTI-VANDAL VARI-FOCAL DOME

P06 INFRA-RED VARI-FOCAL DOME

P07 PINHOLE HIDDEN CAMERA

UltraVision

Breakthrough DSP

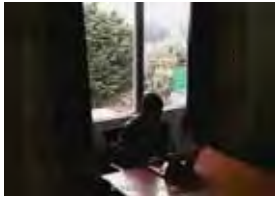


The best WDR performance ever seen along with superior image resolution to achieve the most accurate images...

UltraVision DSP Cameras Main Features:

- 650 TVL resolution
- WDR performance
- 0.0003 lux sensitivity
- 3D-DNR (Digital Noise Reduction)
- Digital image stabilizer
- OSD control
- Motion detection & Privacy masking
- Intelligent IR (IR Cameras)
- X10 Digital Zoom

Conventional DSP



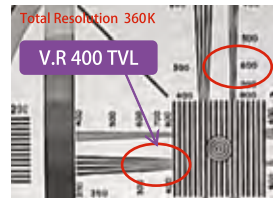
UltraVision DSP



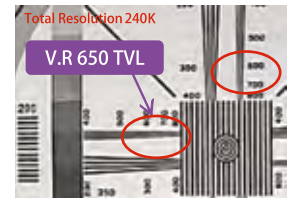
• WDR (Wide Dynamic Range)

The best WDR solution ever seen! "UltraVision" DSP provides true and vivid color image in any conditions even under extreme back light circumstances.

Conventional DSP



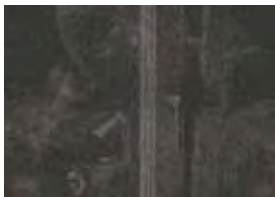
UltraVision DSP



• 650TVL - ULTRA HIGH H&V RESOLUTION

While normal high resolution cameras provide only Horizontal high resolution, the "UltraVision" DSP can provide 650TVL for both Vertical and Horizontal resolutions. Comparing overall resolution "UltraVision" is providing higher resolution even of 650 TVL camera.

Conventional DSP



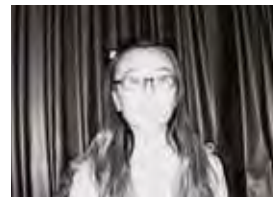
UltraVision DSP



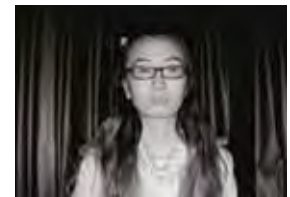
• HIGH SENSITIVITY TRUE DAY&NIGHT

"UltraVision" DSP provides superior performance even at extreme low light situations down to 0.0003Lux (F.1 B&W with Sens-UP on)

Conventional DSP



UltraVision DSP



• INTELLIGENT IR

UltraVision DSP performs an Intelligent IR function, to prevent saturated pixels caused by reflected IR light.

Conventional DSP



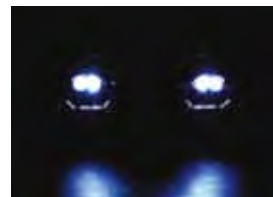
UltraVision DSP



• 3D-DNR (Digital Noise Reduction)

"UltraVision" DSP is equipped with the most advanced motion compensated 3D-DNR function, which results in superior noise reduction with less motion blurring artifacts even at extreme low-light situations.

Conventional DSP



UltraVision DSP



• CAR PLATE RECOGNITION

"UltraVision" excellent WDR performance along with its HCR (headlight car recognition) function provides the best solution for car plate recognition applications.

ULTRAVISION PROFESSIONAL BOX CAMERA

BX-371UV



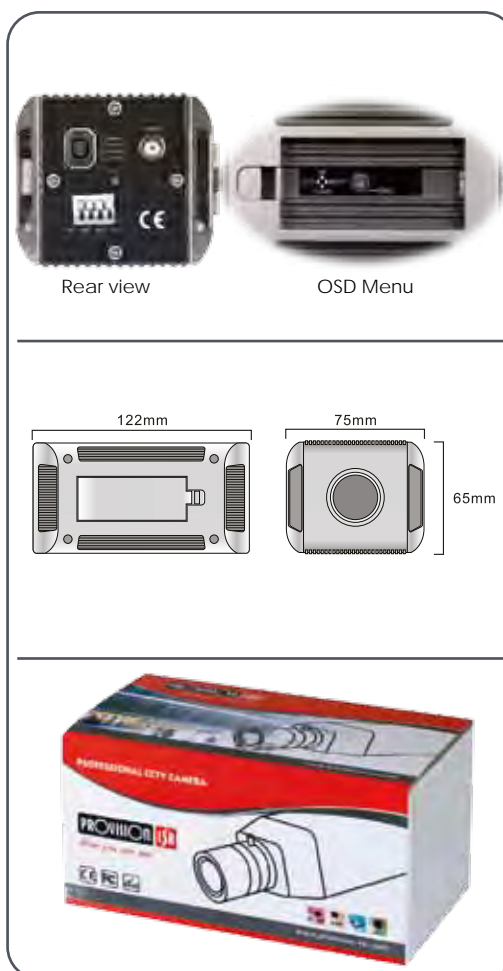
Features

- Superb Wide Dynamic Range
- BLC/HLC
- 650TVL
- 3D-DNR
- OSD Menu
- Superior night function (0.003 LUX)
- Motion detection & Privacy masking
- X10 digital zoom



Specifications

MODEL	BX-371UV
Image Sensor	1/3" Sony CCD (PAL:ICX639BK/NTSC:ICX638BK)
DSP System	UltraVision DSP
Effective Pixels	PAL: 752(H)×582(V) / NTSC: 768(H)×494(V)
Scanning System	2 : 1 Interlace
O.S.D	Available
Sync. System	Internal/Line lock
Horizontal Resolution	650TVL
3D-DNR	Off/On(1~63 level adjustable)
S/N(Y Singal)	52dB(AGC OFF)
Lens mount	C/CS
Minimum Illumination	Color: 0.003(0.6)Lux(Sens-up OFF)/B/W: 0.0001(0.1)Lux(Sens-up OFF)
Privacy zone	On/Off(8Zone)
Sens-up	Auto/Fixed/Off(selectable limit ×2~×512)
Motion Detection	On/Off(8Zone, Alarm output)
Dynamic Range	52dB(×128)
Digital Zoom	On(×10)/Off
Electronic Shutter Speed	NTSC:1/60sec-1/120,000sec PAL:1/50sec-1/120,000sec
Backlight Compensation	WDR/BLC/OFF selectable
Gain Control	Low/Middle/High/Off selectable
D/N Selection	Color/Black&White/Auto/Exit
STABILIZER	On / Off
Mirror(H-REV)	On / Off
FLIP(V-REV)	On / Off
White Balance	ATW/AWC/Manual/Outdoor
Freeze	On / Off
SHARPNESS	On/Off(Level Adjustable)
Blemish compensation	64 Point(Even 32 point, ODD 32 point)
Iris Control	DC/Manual
Power	DC12±10% Max 2.0W
Dimension	122(L)×75(W)×65(H)mm
Weight	410g



ULTRAVISION VARI-FOCAL DOME CAMERA DX-371UVVF



3 Axis
180° Tilt Rotation
180° Pan Rotation
360° Horizontal Rotation

Features

- Superb Wide Dynamic Range
- 2.8~12mm Mega-Pixel lens
- 650TVL
- 3D-DNR
- OSD Menu
- Superior night function (0.003 LUX)
- Motion detection & Privacy masking
- 3 Axis Case Mechanism
- X10 digital zoom

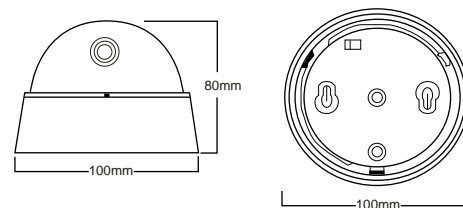


Specifications

MODEL	DX-371UVVF
Image Sensor	1/3" Sony CCD (PAL:ICX639BK/NTSC:ICX638BK)
DSP System	UltraVision DSP
Effective Pixels	PAL: 752(H)×582(V) / NTSC: 768(H)×494(V)
Scanning System	2 : 1 Interlace
O.S.D	Available
Sync. System	Internal/Line lock
Horizontal Resolution	650TVL
3D-DNR	Off/On(1~63 level adjustable)
S/N(Y Singal)	52dB(AGC OFF)
Lens mount	2.8~12mm Vari-Focal Mega-Pixel Lens
Minimum Illumination	Color: 0.003(0.6)Lux(Sens-up OFF)/B/W: 0.0001(0.1)Lux(Sens-up OFF)
Privacy zone	On/Off(8Zone)
Sens-up	Auto/Fixed/Off(selectable limit ×2~×512)
Motion Detection	On/Off(8Zone, Alarm output)
Dynamic Range	52dB(×128)
Digital Zoom	On(×10)/Off
Electronic Shutter Speed	NTSC:1/60sec-1/120,000sec PAL:1/50sec-1/120,000sec
Backlight Compensation	WDR/BLC/OFF selectable
Gain Control	Low/Middle/High/Off selectable
D/N Selection	Color/Black&White/Auto/Exit
STABILIZER	On / Off
Mirror(H-REV)	On / Off
FLIP(V-REV)	On / Off
White Balance	ATW/AWC/Manual/Outdoor
Freeze	On / Off
SHARPNESS	On/Off(Level Adjustable)
Blemish compensation	64 Point(Even 32 point, ODD 32 point)
Iris Control	DC/Manual
Power	DC12±10% Max 2.0W
Dimension	100W x 80H mm
Weight	280g



OSD Controller



ULTRAVISION ANTI-VANDAL VARI-FOCAL DOME

DA-371UVVF



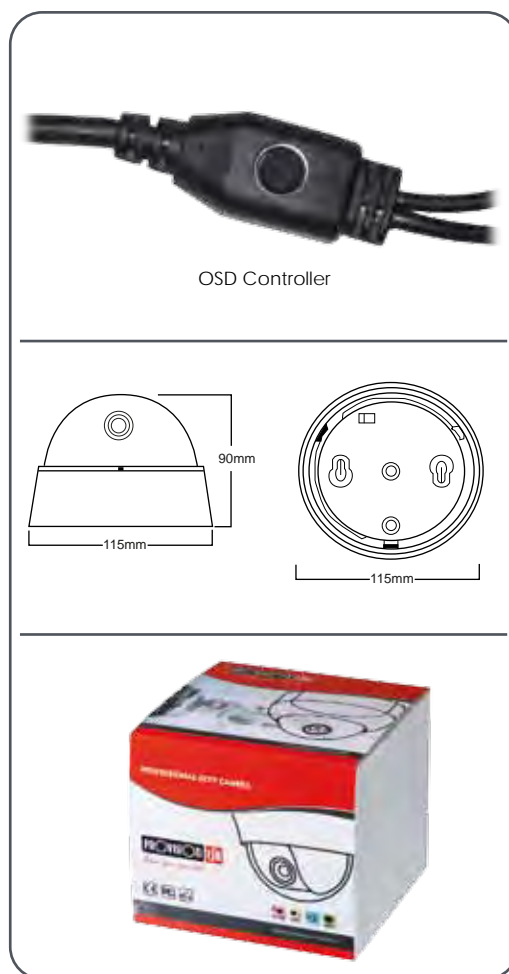
Features

- Superb Wide Dynamic Range
- Anti-Vandal Dome Camera
- 2.8-12mm Mega-Pixel lens
- 650TVL
- 3D-DNR
- OSD Menu
- Superior night function (0.003 LUX)
- Motion detection & Privacy masking
- 3 Axis Case Mechanism
- X10 digital zoom



Specifications

MODEL	DA-371UVVF
Image Sensor	1/3" Sony CCD (PAL:ICX639BK/NTSC:ICX638BK)
DSP System	UltraVision DSP
Effective Pixels	PAL: 752(H)×582(V) / NTSC: 768(H)×494(V)
Scanning System	2 : 1 Interlace
O.S.D	Available
Sync. System	Internal/Line lock
Horizontal Resolution	650TVL
3D-DNR	Off/On(1~63 level adjustable)
S/N(Y Singal)	52dB(AGC OFF)
Lens mount	2.8-12mm Vari-Focal Mega-Pixel Lens
Minimum Illumination	Color: 0.003(0.6)Lux(Sens-up OFF)/B/W: 0.0001(0.1)Lux(Sens-up OFF)
Privacy zone	On/Off(8Zone)
Sens-up	Auto/Fixed/Off(selectable limit ×2~×512)
Motion Detection	On/Off(8Zone, Alarm output)
Dynamic Range	52dB(×128)
Digital Zoom	On(×10)/Off
Electronic Shutter Speed	NTSC:1/60sec-1/120,000sec PAL:1/50sec-1/120,000sec
Backlight Compensation	WDR/BLC/OFF selectable
Gain Control	Low/Middle/High/Off selectable
D/N Selection	Color/Black&White/Auto/Exit
STABILIZER	On / Off
Mirror(H-REV)	On / Off
FLIP(V-REV)	On / Off
White Balance	ATW/AWC/Manual/Outdoor
Freeze	On / Off
SHARPNESS	On/Off(Level Adjustable)
Blemish compensation	64 Point(Even 32 point, ODD 32 point)
Iris Control	DC/Manual
Power	DC12±10% Max 2.0W
Dimension	115W x 90H mm
Weight	520g



ULTRAVISION INFRA-RED VARI-FOCAL DOME

DI-371UVVF



B-Black



G-Grey



W-White

Features

- Superb Wide Dynamic Range
- Intelligent IR, 25 mt
- 4-9mm Lens
- 650TVL
- 3D-DNR
- OSD Menu
- Superior night function (0.003 LUX)
- Motion detection & Privacy masking
- X10 digital zoom

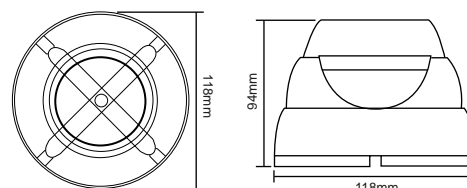


Specifications

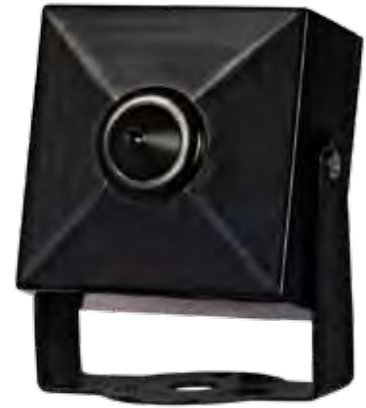
MODEL	DI-371UVVF
Image Sensor	1/3" Sony CCD (PAL:ICX639BK/NTSC:ICX638BK)
DSP System	UltraVision DSP
Effective Pixels	PAL: 752(H)×582(V) / NTSC: 768(H)×494(V)
Scanning System	2 : 1 Interlace
O.S.D	Available
Sync. System	Internal/Line lock
Horizontal Resolution	Color 650TVL
3D-DNR	Off/On(1~63 level adjustable)
S/N(Y Singal)	52dB(AGC OFF)
Lens mount	4-9mm Vari-Focal
Minimum Illumination	Color: 0.003(0.6)Lux(Sens-up OFF) (0 Lux IR On) 36 IR Led 25m
Privacy zone	On/Off(8Zone)
Sens-up	Auto/Fixed/Off(selectable limit ×2~×512)
Motion Detection	On/Off(8Zone, Alarm output)
Dynamic Range	52dB(×128)
Digital Zoom	On(×10)/Off
Electronic Shutter Speed	NTSC:1/60sec-1/120,000sec PAL:1/50sec-1/120,000sec
Backlight Compensation	WDR/BLC/OFF selectable
Gain Control	Low/Middle/High/Off selectable
D/N Selection	Color/Black&White/Auto/Exit
STABILIZER	On / Off
Mirror(H-REV)	On / Off
FLIP(V-REV)	On / Off
White Balance	ATW/AWC/Manual/Outdoor
Freeze	On / Off
SHARPNESS	On/Off(Level Adjustable)
Blemish compensation	64 Point(Even 32 point, ODD 32 point)
Iris Control	DC/Manual
Power	DC12±10% Max 2.0W
Dimension	118W x 94H mm
Weight	730g



OSD Controller



ULTRAVISION PINHOLE HIDDEN CAMERA MC-371UV



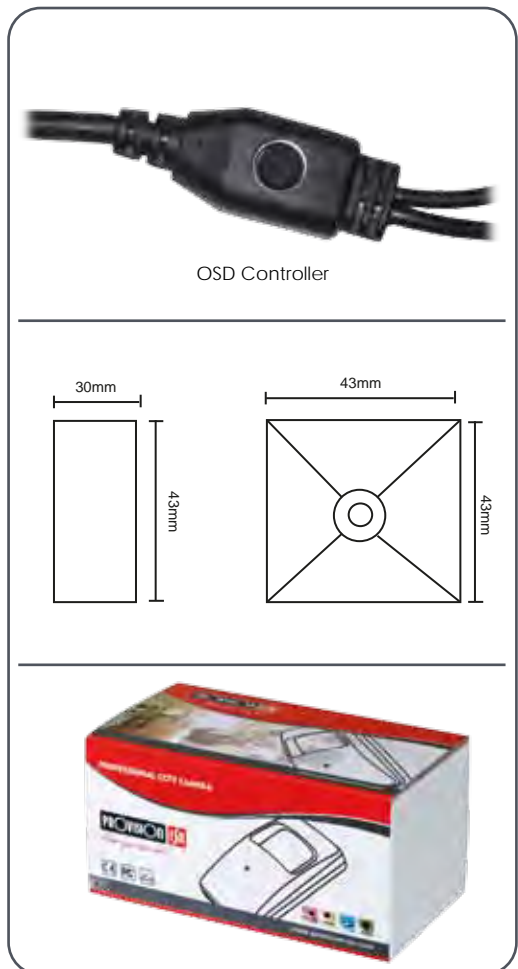
Features

- Superb Wide Dynamic Range
- Small and Compact Design
- 3.7mm Pin-Hole Lens
- 650TVL
- 3D-DNR
- OSD Menu
- Superior night function (0.003 LUX)
- Motion detection & Privacy masking
- X10 digital zoom



Specifications

MODEL	MC-371UV
Image Sensor	1/3" Sony CCD (PAL:ICX639BK/NTSC:ICX638BK)
DSP System	UltraVision DSP
Effective Pixels	PAL: 752(H)×582(V) / NTSC: 768(H)×494(V)
Scanning System	2 : 1 Interlace
O.S.D	Available
Sync. System	Internal/Line lock
Horizontal Resolution	Color 650TVL
3D-DNR	Off/On(1~63 level adjustable)
S/N(Y Singal)	52dB(AGC OFF)
Lens mount	3.7mm Lens
Minimum Illumination	Color: 0.003(0.6)Lux(Sens-up OFF)/B/W: 0.0001(0.1)Lux(Sens-up OFF)
Privacy zone	On/Off(8Zone)
Sens-up	Auto/Fixed/Off(selectable limit ×2~×512)
Motion Detection	On/Off(8Zone, Alarm output)
Dynamic Range	52dB(×128)
Digital Zoom	On(×10)/Off
Electronic Shutter Speed	NTSC:1/60sec-1/120,000sec PAL:1/50sec-1/120,000sec
Backlight Compensation	WDR/BLC/OFF selectable
Gain Control	Low/Middle/High/Off selectable
D/N Selection	Color/Black&White/Auto/Exit
STABILIZER	On / Off
Mirror(H-REV)	On / Off
FLIP(V-REV)	On / Off
White Balance	ATW/AWC/Manual/Outdoor
Freeze	On / Off
SHARPNESS	On/Off(Level Adjustable)
Blemish compensation	64 Point(Even 32 point, ODD 32 point)
Iris Control	DC/Manual
Power	DC12±10% Max 2.0W
Dimension	43L x 30W x 43H mm
Weight	90g



EFFIO-E 650TVL CAMERA Series



The world tendency for CCTV solutions is very clear: Higher and higher resolution surveillance solution. A complete "Higher resolution" surveillance solution allows both reducing the Number of cameras used per site and mainly improving the video quality for better details. EFFIO-E is Sony's latest DSP series using Sony's latest 960 horizontal effective pixel CCD and provides horizontal resolution of 650TVL, equipped with full OSD menu and advance features like 2D-DNR, Color Rolling control , HLC and more ...

BX-372CS



I3-370CS(VF)



DI-372CS(VF)



DX-372CS(VF)



P10 PROFESSIONAL BOX CAMERA

P11 VARI-FOCAL DOME CAMERA

P12 INFRA-RED VARI-FOCAL DOME

P13 VARI-FOCAL INFRA RED

Effio-E

SONY's latest DSP

Enjoy 650 TVL resolution cameras by using Sony Effio-E DSP technology with Sony latest 960H CCD image.



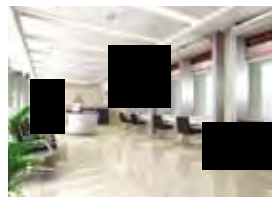
SONY effio-E Cameras Main Features:

- 650 TVL resolution
- 0.03 lux sensitivity
- 2D-DNR (Digital Noise Reduction)
- Color rolling control
- OSD control
- Motion detection
- HLC-Headlights compensation
- Privacy masking

Sony Effio-E



- Over650TVL-Using Sony latest 960H CCD sensor

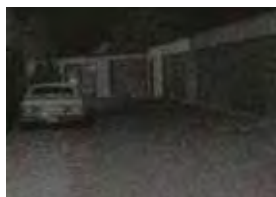


- Privacy masking



- Advanced Motion detection

Conventional CCD



- Low Lux

Sony Effio - E can produce image down to 0.01 lux (B/W f.1.0)

Sony Effio-E



Conventional CCD



- HLC-Headlights compensation

Sony Effio-E



Conventional CCD



- Color rolling control

Conventional CCD



Sony Effio-E



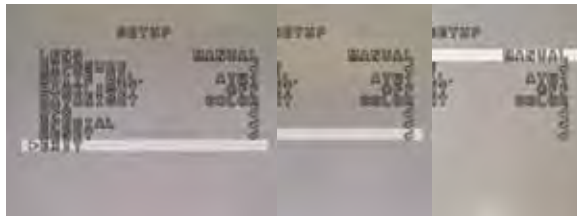
- Excellent color reproduction
Color chart under yellow light.

Sony Effio-E



- Color rolling control

Sony Effio-E



- OSD Menu

EFFIO-E PROFESSIONAL BOX CAMERA

BX-372CS



Features

- 650 TVL
- 2D Noise Reduction
- OSD Menu
- Motion Detection and Privacy Masking
- Color Rolling Control
- BLC/HLC

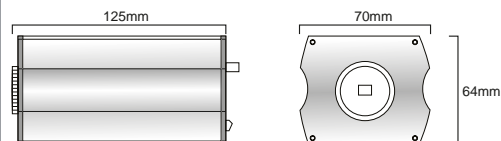


Specifications

MODEL	BX-372CS
Image Sensor	1/3" Sony DS CCD (PAL:ICX673AK/NTSC:ICX672AK)
DSP System	CXD4127
Effective Pixels	PAL:976(H)x582(V) / NTSC:976(H)x494(V)
Scanning System	PAL/NTSC
Horizontal Resolution	650TVL
Min. Illumination	0.03 Lux / F1.0
OSD Menu	Available(7 languages)
Backlight Compensation	BLC/HLC/OFF selectable
Sync. System	Internal
S/N Ratio	≥48db (AGC Off)
White Balance	ATW/PUSH/USER 1/USER 2/ANTI CR/MANUAL/PUSH CLOCK
Gamma Correction	0.45
Gain Control	Yes
Motion Detection	On/Off(4 Zone)
Privacy Masking	On/Off(4 Zone)
Mirror(H-REV)	On/Off
SHARPNESS	On/Off (Level Adjustable)
D/N Selection	Color/B/W/Auto
ATR	On/Off
Noise Reduce	2D-DNR
Picture Adjustment	Yes
White Pixel Detection and Compensation	Static and Dynamic
Automatic Adjustment of Mechanical Iris	Yes
Analog Output	Y/C Separate video, Composite video
Lens	C/CS Lens, DC/Video Iris Optional
Power	DC12V±10% Max 2.0W
Dimension	125L x 70W x 64H mm
Net Weight	530g Without Lens



Rear View



EFFIO-E VARI-FOCAL DOME CAMERA

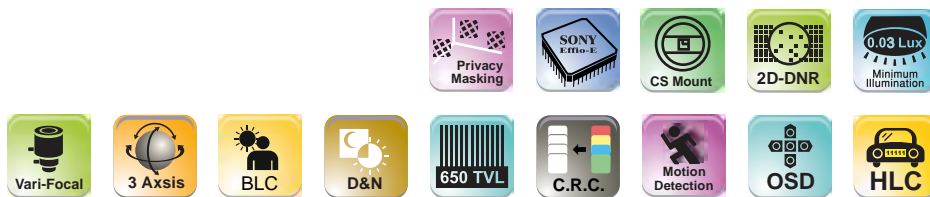
DX-372CSVF

Features

- 650 TVL
- 4-9mm Vari-Focal Lens
- 3 Axis Mechanism
- 2D Noise Reduction
- OSD Menu
- Motion Detection and Privacy Masking
- Color Rolling Control
- BLC/HLC



3 Axis
180° Tilt Rotation
180° Pan Rotation
360° Horizontal Rotation

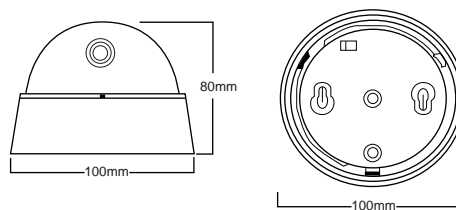


Specifications

MODEL	DX-372CSVF
Image Sensor	1/3" Sony DS CCD (PAL:ICX673AK/NTSC:ICX672AK)
DSP System	CXD4127
Effective Pixels	PAL:976(H)x582(V) / NTSC:976(H)x494(V)
Scanning System	PAL/NTSC
Horizontal Resolution	650TVL
Min. Illumination	0.03 Lux / F1.0
OSD Menu	Available(7 languages)
Backlight Compensation	BLC/HLC/OFF selectable
Sync. System	Internal
S/N Ratio	≥48db (AGC Off)
White Balance	ATW/PUSH/USER 1/USER 2/ANTI CR/MANUAL/PUSH CLOCK
Gamma Correction	0.45
Gain Control	Yes
Motion Detection	On/Off(4 Zone)
Privacy Masking	On/Off(4 Zone)
Mirror(H-REV)	On/Off
SHARPNESS	On/Off (Level Adjustable)
D/N Selection	Color/B/W/Auto
ATR	On/Off
Noise Reduce	2D-DNR
Picture Adjustment	Yes
White Pixel Detection and Compensation	Static and Dynamic
Automatic Adjustment of Mechanical Iris	Yes
Analog Output	Y/C Separate video, Composite video
Lens	4-9mm Vari-Focal lens
Power	DC12V±10% Max 2.0W
Dimension	100W x 80H mm
Net Weight	280g



Individual ceiling mount for fast and easy installation



EFFIO-E INFRA-RED VARI-FOCAL DOME

DI-372CSVF



B-Black



G-Grey



W-White

Features

- 650 TVL
- 4-9mm Vari-Focal Lens
- 25mt IR Distance
- 2D Noise Reduction
- OSD Menu
- Motion Detection and Privacy Masking
- Color Rolling Control
- BLC/HLC

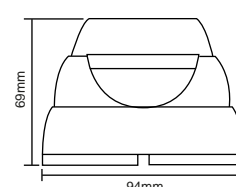
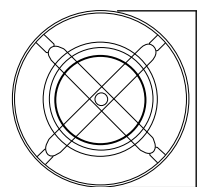


Specifications

MODEL	DI-372CSVF
Image Sensor	1/3" Sony DS CCD (PAL:ICX673AK/NTSC:ICX672AK)
DSP System	CXD4127
Effective Pixels	PAL:976(H)x582(V) / NTSC:976(H)x494(V)
Scanning System	PAL/NTSC
Horizontal Resolution	650TVL
Min. Illumination	0.03 Lux / F1.0 (0 Lux IR On), 36 IR Leds / 25mt
OSD Menu	Available(7 languages)
Backlight Compensation	BLC/HLC/OFF selectable
Sync. System	Internal
S/N Ratio	≥48db (AGC Off)
White Balance	ATW/PUSH/USER 1/USER 2/ANTI CR/MANUAL/PUSH CLOCK
Gamma Correction	0.45
Gain Control	Yes
Motion Detection	On/Off(4 Zone)
Privacy Masking	On/Off(4 Zone)
Mirror(H-REV)	On/Off
SHARPNESS	On/Off (Level Adjustable)
D/N Selection	Color/B/W/Auto
ATR	On/Off
Noise Reduce	2D-DNR
Picture Adjustment	Yes
White Pixel Detection and Compensation	Static and Dynamic
Automatic Adjustment of Mechanical Iris	Yes
Analog Output	Y/C Separate video, Composite video
Lens	4-9mm Vari-Focal lens
Power	DC12V±10% Max 2.0W
Dimension	94W x 69H mm
Net Weight	730g



OSD Menu Controller



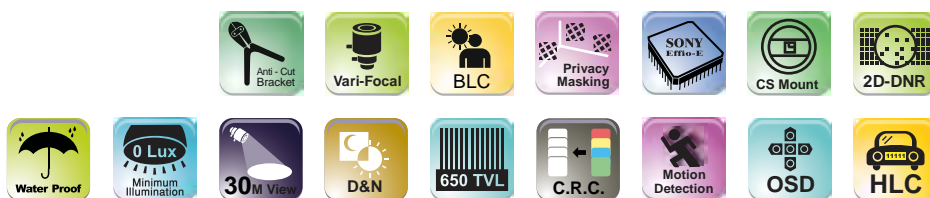
EFFIO-E VARI-FOCAL INFRA RED

I3-370CSVF



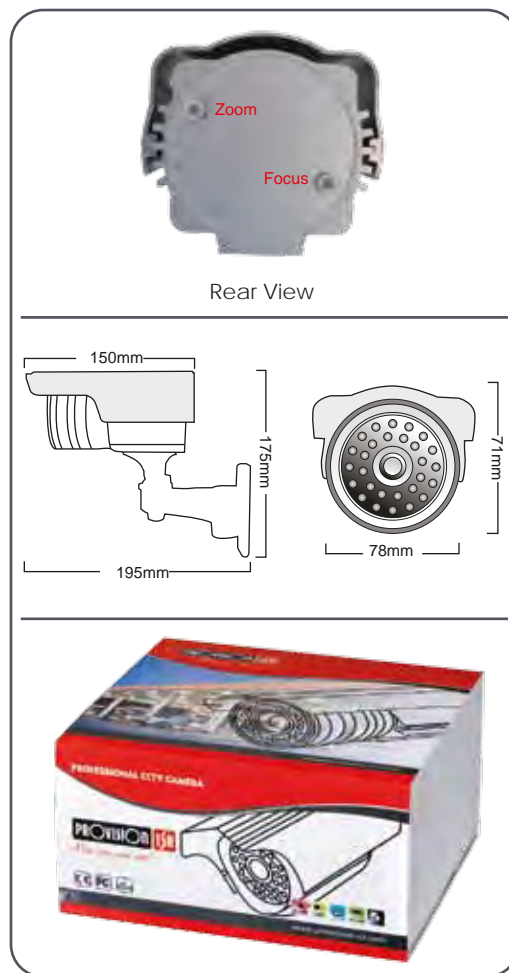
Features

- 650 TVL
- 4-9mm Vari-Focal Lens
- 30mt IR Distance
- Waterproof
- 2D Noise Reduction
- OSD Menu
- Motion Detection and Privacy Masking
- Color Rolling Control
- BLC/HLC



Specifications

MODEL	I3-370CSVF
Image Sensor	1/3" Sony DS CCD (PAL:ICX673AK/NTSC:ICX672AK)
DSP System	CXD4127
Effective Pixels	PAL:976(H)x582(V) / NTSC:976(H)x494(V)
Scanning System	PAL/NTSC
Horizontal Resolution	650TVL
Min. Illumination	0.003 Lux / F1.0 (0 Lux IR On), 36 IR Leds / 30mt
OSD Menu	Available(7 languages)
Backlight Compensation	BLC/HLC/OFF selectable
Sync. System	Internal
S/N Ratio	≥48db (AGC Off)
White Balance	ATW/PUSH/USER 1/USER 2/ANTI CR/MANUAL/PUSH CLOCK
Gamma Correction	0.45
Gain Control	Yes
Motion Detection	On/Off(4 Zone)
Privacy Masking	On/Off(4 Zone)
Mirror(H-REV)	On/Off
SHARPNESS	On/Off (Level Adjustable)
D/N Selection	Color/B/W/Auto
ATR	On/Off
Noise Reduce	2D-DNR
Picture Adjustment	Yes
White Pixel Detection and Compensation	Static and Dynamic
Automatic Adjustment of Mechanical Iris	Yes
Analog Output	Y/C Separate video, Composite video
Lens	4-9mm Vari-Focal lens
Power	DC12V±10% Max 2.0W
Dimension	195L x 78W x 175H mm
Net Weight	810g



TRADITIONAL BOX CAMERA

Series



Box cameras are usually installed when there is a need for special lenses, or when there is a need for quality video capture. Provision-ISR box cameras are all made of first grade components to provide a superior video quality.

The main advantages of Box cameras compare to other cameras are-

1. **Lens flexibility:** Unlike others cameras where the manufacturer determines the lens sizes, with BOX cameras it is possible to adjust the lens in accordance with the client's needs, the lighting conditions, distances and size of the object captured.
2. **Video controls:** the video controls is done by DIP switches or OSD (On Screen Display) buttons at the back of the camera which allows to control video functions such as:

AGC - Auto gain control (on/off), Increasing the video signal when there is a low amount of light to achieve a brighter image

BLC - Back light compensation (on/off), adjusts the image to compensate for areas that are overshadowed caused by majority of brighter areas.

AES - Electronic shutter speed and more...

Box cameras can be used indoor with mounting brackets or outdoor in weatherproof housings.



P15 ECONOMY CAMERA

P16 STANDARD CAMERA

P17 HIGH RESOLUTION CAMERA

P18 ZOOM CAMERA

BOX ECONOMY CAMERA

BX-425CS



Features

- Built in Mini microphone
- Back light compensation
- Auto White balance
- Support DC/VIDEO Auto iris Lens
- Dip Switch Control
- Terminal Block Power Socket



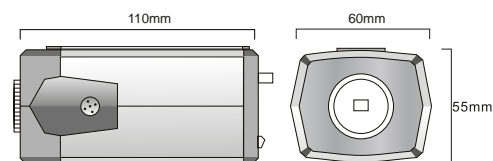
Specifications

MODEL	BX-425CS
Image Sensor	1/4" Sony CCD (PAL:ICX643BK/NTSC:ICX642BK)
DSP System	CXD3142
TV System	PAL/NTSC
Effective Pixels	PAL:537 (H) x 597 (V) NTSC:537 (H) x 505 (V)
Horizontal Resolution	420TVL
Minimum Illumination	0.5 LUX/F1.2
S/N Ratio	48db (AGC Off)
Video Output	Composite 1.0Vp-p at 75Ohm
White Balance	AWB
Electronic Shutter	1/50 ~ 1/120000 Sec.
Gamma Correction	0.45
Sync. System	Internal
Auto Iris Control	Video/DC Switchable
Lens	C/CS
Power	DC 12V / 180mA
Operation Temperature	-10°C ~ 50°C
Dimension	110L x 60W x 55H mm
Net Weight	380g



Rear View
Case D

Case D



BOX STANDARD CAMERA

BX-322CS



Features

- Day & Night Function
- Built-in Mini microphone
- Back light compensation
- Auto White balance
- Support DC/VIDEO Auto Iris Lens
- Dip Switch Control



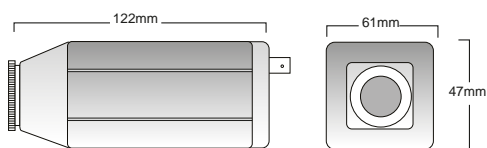
Specifications

MODEL	BX-322CS
Image Sensor	1/3" Sony CCD (PAL:ICX633BK/NTSC:ICX632BAK)
DSP System	CXD3142
TV System	PAL/NTSC
Effective Pixels	PAL:537(H)×597(V) / NTSC:537(H)×505(V)
Horizontal Resolution	420TVL
Minimum Illumination	0.05 LUX/F1.2
S/N Ratio	48db (AGC Off)
Video Output	Composite 1.0Vp-p at 75Ohm
White Balance	AWB
Electronic Shutter	1/50 ~ 1/120000 Sec.
Gamma Correction	0.45
Sync. System	Internal
Auto Iris Control	Video/DC Switchable
Lens	C/CS
Power	DC 12V or DC12V/AC24V Dual Voltage (Optional)
Operation Temperature	-10°C ~ 50°C
Dimension	105L x 66W x 52H mm
Net Weight	300g



Rear View
Case B

Case B



BOX HIGH RESOLUTION CAMERA

BX-352CS



Features

- Day & Night Function
- Built-in Mini microphone
- Back light compensation
- Auto White balance
- Support DC/VIDEO Auto iris Lens
- Dip Switch Control



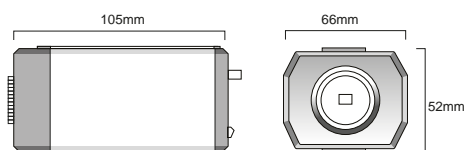
Specifications

MODEL	BX-352CS
Image Sensor	1/3" Sony CCD (PAL:ICX639BK/NTSC:ICX638BK)
DSP System	CXD3172
TV System	PAL/NTSC
Effective Pixels	PAL:795(H)x596(V) / NTSC:811(H)x508(V)
Horizontal Resolution	540TVL
Minimum Illumination	0.02 LUX/F1.2
S/N Ratio	48db (AGC Off)
Video Output	Composite 1.0Vp-p at 75Ohm
White Balance	AWB
Electronic Shutter	1/50 ~ 1/120000 Sec.
Gamma Correction	0.45
Sync. System	Internal
Auto Iris Control	Video/DC Switchable
Lens	C/CS
Power	DC 12V or DC12V/AC24V Dual Voltage (Optional)
Operation Temperature	-10°C ~ 50°C
Dimension	105L x 66W x 52H mm
Net Weight	310g



Rear View
Case H

Case H



BOX ZOOM CAMERA

BZ-441CS

BZ-422CS



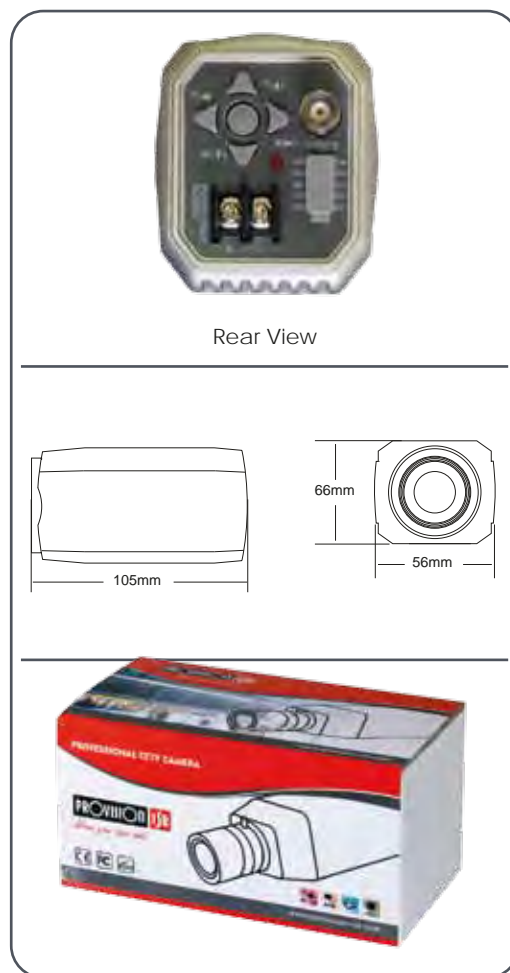
Features

- 27X Optical Zoom / 20X Digital Zoom
- Support Presets
- Fast Focus Speed
- Focus Border Set
- DSS-Digital Slow Shutter (BZ-441CS)
- PIP-Picture In Picture (BZ-441CS)
- Cross Line (BZ-441CS)
- True Day & Night IR Cut Filter (BZ-441CS)



Specifications

MODEL	BZ-441CS	BZ-422CS
Image Sensor	1/4" Sony Super HAD CCD	
Sync. System	PAL 50Hz Internal Lock	
Horizontal Resolution	470TVL Color/550TVL B/W	420TVL
Min. Sence Illumination	0.001 Lux:Low Shutter (F1.6/30IRE)	0.1 Lux
Video Output Signal	1.0Vp-p 75Ohm VBS	
S/N Ratio	52db (AGC Off)	
Focus Lenght	3.9 ~ 85.8mm	
Max. Aperture Ratio	F1.6 (Wide) ~ F3.7 (Tele)	
Zoom Ratio	Optical 27X, Digital 20X	
Min. Object Distance	0.1m (Wide), 1.5m (Tele)	
Focus Control	Auto/Manual, Push Auto	
Exposure Control	Auto, Shutter, Iris, AGC, Manual	
White Balance Control	AWB, Indoor, Outdoor, Push Auto, Manual	
BLC Function	Built-In (On/Off)	
Functions	B/W, Positive/Negative, Flickerless, Camera ID Mirror, Reduce Noise, PIP, Cross Line	B/W, Positive/Negative, Flickerless, Camera ID Mirror
OSD	Built-In (Push On/Off)	
Wide Dynamic Range	Built-In (On/Off)	
Day & Night Function	Built-In (Off/BW/Color) Sense Up X60	
Camera Control	AD Keys/RS232(TTL)/RS485	
O.L.P.F. Change	True Day & Night ICR(IR Cut Filter Mechanical Removable)	No
Infrared Support	Yes	
Power	DC12V±10% Max 5.1W	
Operating Temp.	-10°C~50°C (Humidity: 0%RH~80%RH)	
Storage Temp.	-20°C~60°C (Humidity: 0%RH~80%RH)	
Dimensions	105L x 56W x 66H mm	
Weight	380g	



Rear View

BOX CAMERA CASES

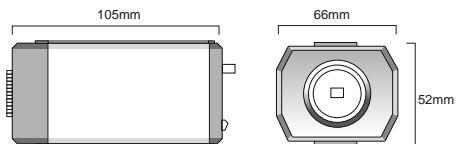
H



- Elegant Design.
- DC Power Socket.
- Internal Microphone.
- Dip switch control



Rear view



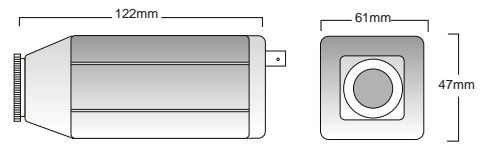
B



- DC Power Socket.
- Internal Microphone.
- Dip switch control



Rear view



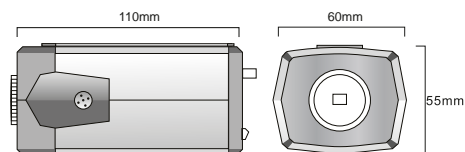
D



- Professional Case
- Terminal Block Power Socket.
- Internal Microphone.



Rear view



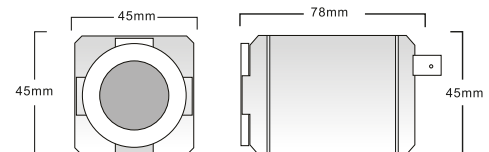
M



- Compact design
- DC Power Socket.
- Dip switch control



Rear view



DOME CAMERA

Series



Dome cameras are considered to be the most common CCTV cameras for indoor use. The round shape structure gives "DOME" cameras it unique character and makes it difficult to identify the direction the camera is pointed to, therefore It can be installed at buildings entrances, shops, offices and malls. DOME cameras also have a wide range of solutions-

- **Fixed lens DOME cameras** usually mounted with 3.6mm lens which produces an angle of 90°, so the camera could be mounted in corners allowing capturing of almost the entire room.
- **Vari-focal lens dome cameras** for best adjustments to the client requirements, allowing the best scene capturing and for faster installation.
- **Infrared Red dome cameras** for delivering clear image at both day and night time.
- **Anti Vandal cameras** for public areas.

The Provision-ISR dome camera design is based on many years of experience and knowledge in the CCTV industry, in order to bring you the best image for any required application.



P23 VARI-FOCAL CAMERAS

P21-22 CLASSIC DOME CAMERA

P24-25 ANTI-VANDAL CAMERAS

P26-27 FIX LENS IR CAMERAS

P28 VARI-FOCAL INFRA RED

P29 CORNER MOUNT CAMERA

DOME STANDARD CAMERA

DX-322CS(BJ)

DX-425CS(BJ)



B-BLACK



W-WHITE

Features

- 420 TVL SONY CCD
- Compact and Beautiful Design
- Auto White Balance
- 3.6mm Wide angle lens
- Indoor application

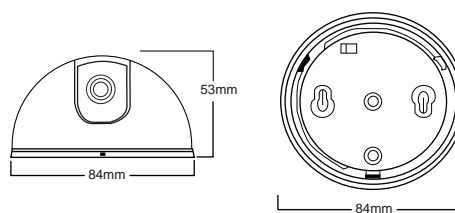


Specifications

MODEL	DX-322CS	DX-425CS
Image Sensor	1/3" Sony CCD (PAL:ICX633BK/NTSC:ICX632BK)	1/4" Sony CCD (PAL:ICX643BK/NTSC:ICX642BK)
DSP System	CXD3142	
TV System	PAL/NTSC	
Effective Pixels	PAL:537(H)×597(V) / NTSC:537(H)×505(V)	
Horizontal Resolution	420TVL	
Minimum Illumination	0.05 LUX/F1.2	0.5 LUX/F1.2
S/N Ratio	48db (AGC Off)	
Video Output	Composite 1.0Vp-p at 75Ohm	
White Balance	Auto (AWB)	
Electronic Shutter	Auto (1/50 ~ 1/100000 Sec.)	
Gamma Correction	0.45	
Sync. System	Internal	
Gain Control	Auto (AGC)	
Lens	3.6mm Board Lens	
Power	DC 12V / 150mA	
Operation Temperature	-10°C ~ 50°C	
Dimension	84W x 53H mm	
Net Weight	140g	



Individual ceiling mount for fast and easy installation



DOME HIGH RESOLUTION CAMERA

DX-352CS



SB-BLACK



SW-WHITE

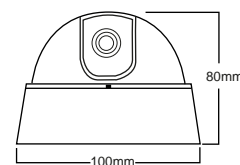
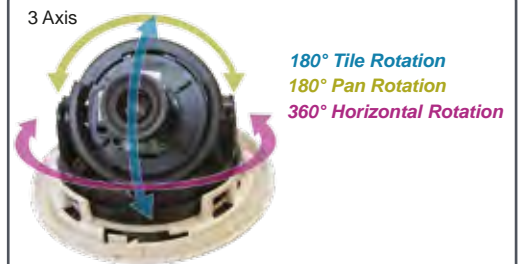
Features

- 540TVL SONY CCD
- 3 AXIS Mechanism
- Robust plastic housing
- Auto White Balance
- Compact and Beautiful Design
- Separated Ceiling Mount Mechanism



Specifications

MODEL	DX-352CS
Image Sensor	1/3" Sony CCD (PAL:ICX639BK/NTSC:ICX638BK)
DSP System	CXD3172
TV System	PAL/NTSC
Effective Pixels	PAL:795(H)x596(V) / NTSC:811(H)x508(V)
Horizontal Resolution	540TVL
Minimum Illumination	0.02 LUX/F1.2
S/N Ratio	48db (AGC Off)
Video Output	Composite 1.0Vp-p at 75Ohm
White Balance	Auto (AWB)
Electronic Shutter	Auto (1/50 ~ 1/100000 Sec.)
Gamma Correction	0.45
Sync. System	Internal
Gain Control	Auto (AGC)
Lens	3.6mm Board Lens
Power	DC 12V / 180mA
Operation Temperature	-10°C ~ 50°C
Dimension	100W x 80H mm
Net Weight	160g



Individual ceiling mount for fast and easy installation



DOME VARI-FOCAL CAMERA

DX-352CSVF

DX-322CSVF



3 Axis

180° Tilt Rotation

180° Pan Rotation

360° Horizontal Rotation



Features

- 3 AXIS Mechanism
- Vari Focal 4-9mm lens included
- Robust plastic housing
- Auto White Balance
- Beautiful Design
- Separated Ceiling Mount Mechanism

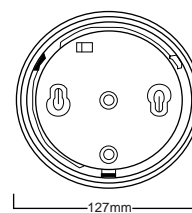
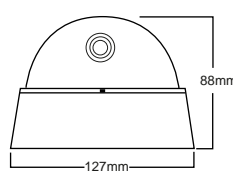


Specifications

MODEL	DX-352CSVF	DX-322CSVF
Image Sensor	1/3" Sony CCD (PAL:ICX639BK/NTSC:ICX638BK)	1/3" Sony CCD (PAL:ICX633BK/NTSC:ICX632BK)
DSP System	CXD3172	CXD3142
TV System	PAL/NTSC	
Effective Pixels	PAL:795(H)×596(V) NTSC:811(H)×508(V)	PAL:537(H)×597(V) NTSC:537(H)×505(V)
Horizontal Resolution	540TVL	420TVL
Minimum Illumination	0.02 LUX/F2.0	0.05 LUX/F2.0
S/N Ratio	48db (AGC Off)	
Video Output	Composite 1.0Vp-p at 75Ohm	
White Balance	Auto (AWB)	
Electronic Shutter	Auto (1/50 ~ 1/120000 Sec.)	
Gamma Correction	0.45	
Sync. System	Internal	
Gain Control	Auto (AGC)	
Lens	4-9mm Vari-focal Lens	
Power	DC 12V / 110mA	
Operation Temperature	-10°C ~ 50°C	
Dimension	127W x 88H mm	
Net Weight	280g	



Individual ceiling mount for fast and easy installation



DOME ANTI-VANDAL CAMERA

DA-352CS(JA)

DA-322CS(JA)



Features

- 1/3" Sony CCD
- Strong metal Armor Housing
- Auto white balance
- Auto electronic shutter

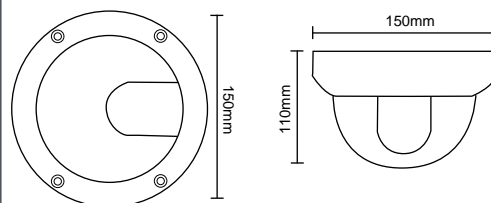


Specifications

MODEL	DA-352CS(JA)	DA-322CS(JA)
Image Sensor	1/3" Sony CCD (PAL:ICX639BK/NTSC:ICX638BK)	1/3" Sony CCD (PAL:ICX633BK/NTSC:ICX632BK)
DSP System	CXD3172	CXD3142
TV System	PAL/NTSC	
Effective Pixels	PAL:795(H)×596(V) NTSC:811(H)×508(V)	PAL:537(H)×597(V) NTSC:537(H)×505(V)
Horizontal Resolution	540TVL	420TVL
Minimum Illumination	0.02 LUX/F1.2	0.05 LUX/F1.2
S/N Ratio	48db (AGC Off)	
Video Output	Composite 1.0Vp-p at 75Ohm	
White Balance	Auto (AWB)	
Electronic Shutter	Auto (1/50 ~ 1/100000 Sec.)	
Gamma Correction	0.45	
Sync. System	Internal	
Gain Control	Auto (AGC)	
Lens	4/6/8mm CS Mount	
Power	DC 12V / 150mA	
Operation Temperature	-10°C ~ 50°C	
Dimension	150L x 110H mm	
Net Weight	490g	



Wall Bracket
(Optional)



DOME ANTI-VANDAL VARI-FOCAL

DA-352CSVF

DA-322CSVF



3.5"



5.5"

Features

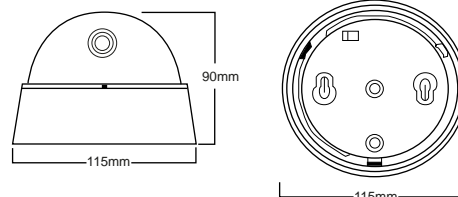
- Strong metal Armor Housing
- 3 Axis Mechanism
- 4~9mm Vari-Focal Lens
- 1/3" Sony CCD
- Day & Night function
- Auto white balance
- Auto electronic shutter



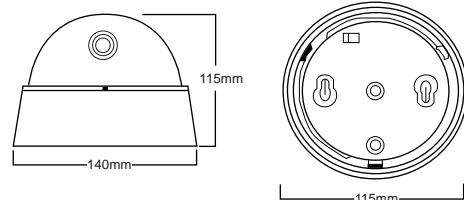
Specifications

MODEL	DA-352CSVF	DA-322CSVF
Image Sensor	1/3" Sony CCD (PAL:ICX639BK/NTSC:ICX638BK)	1/3" Sony CCD (PAL:ICX633BK/NTSC:ICX632BK)
DSP System	CXD3172	CXD3142
TV System	PAL/NTSC	
Effective Pixels	PAL:795(H)×596(V) NTSC:811(H)×508(V)	PAL:537(H)×597(V) NTSC:537(H)×505(V)
Horizontal Resolution	540TVL	420TVL
Minimum Illumination	0.02 LUX/F1.2	0.05 LUX/F1.2
S/N Ratio	48db (AGC Off)	
Video Output	Composite 1.0Vp-p at 75Ohm	
White Balance	Auto (AWB)	
Electronic Shutter	Auto (1/50 ~ 1/100000 Sec.)	
Gamma Correction	0.45	
Sync. System	Internal	
Gain Control	Auto (AGC)	
Lens	4~9mm Vari-Focal Lens	
Power Supply	DC 12V / 150mA	
Operation Temperature	-10°C ~ 50°C	
Dimension	115L x 90H mm (3.5") / 140L x 115H mm (5.5")	
Net Weight	520g (3.5") / 760g (5.5")	

3.5" Case



5.5" Case



DOME INFRA RED PLASTIC CAMERA

DI-325CS(PL)

DI-355CS(PL)



W-White



B-Black

Features

- Plastic case
- 24 IR Leds
- For Day & Night Conditions
- Visible distance at "0" Lux dark (IR on) 15M
- Auto White Balance
- 1/3" SONY CCD

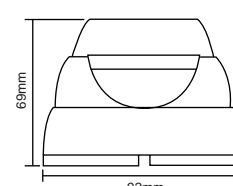
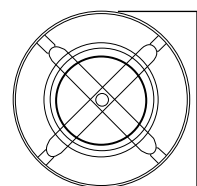


Specifications

MODEL	DI-355CS(PL)	DI-325CS(PL)
Image Sensor	1/3" Sony CCD (PAL:ICX639BK/NTSC:ICX638BK)	1/3" Sony CCD (PAL:ICX633BK/NTSC:ICX632BK)
DSP System	CXD3172	CXD3142
TV System	PAL/NTSC	
Effective Pixels	PAL:795(H)x596(V) NTSC:811(H)x508(V)	PAL:537(H)x597(V) NTSC:537(H)x505(V)
Horizontal Resolution	540TVL	420TVL
Minimum Illumination	0.5 LUX (0 Lux IR On)	
S/N Ratio	48db (AGC Off)	
Video Output	Composite 1.0Vp-p at 75Ohm	
White Balance	Auto (AWB)	
Gain Control	Auto (AGC)	
Electronic Shutter	Auto (1/50 ~ 1/120000 Sec.)	
Gamma Correction	0.45	
Sync. System	Internal	
IR LED	24 PSC	
IR View Distance	15m	
Lens	3.6mm Board Lens	
Power	DC 12V / 110mA	
Operation Temperature	-10°C ~ 50°C	
Dimension	92W x 69H mm	
Net Weight	160g	



Round design for all directions movement



DOME INFRA RED METAL CAMERA

DI-325CS(FL)

DI-355CS(FL)



G-Grey



B-Black



W-White

Features

- Elegant metal case
- 24 IR Leds
- For Day & Night Conditions
- Visible distance at "0" Lux dark (IR on) 15M
- 1/3" SONY CCD
- Auto White Balance

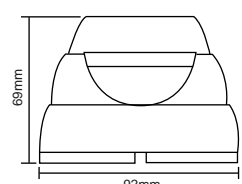
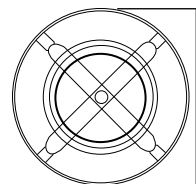


Specifications

MODEL	DI-355CS(FL)	DI-325CS(FL)
Image Sensor	1/3" Sony CCD (PAL:ICX639BK/NTSC:ICX638BK)	1/3" Sony CCD (PAL:ICX633BK/NTSC:ICX632BK)
DSP System	CXD3172	CXD3142
TV System	PAL/NTSC	
Effective Pixels	PAL:795(H)×596(V) NTSC:811(H)×508(V)	PAL:537(H)×597(V) NTSC:537(H)×505(V)
Horizontal Resolution	540TVL	420TVL
Minimum Illumination	0.5 LUX (0 Lux IR On)	
S/N Ratio	48db (AGC Off)	
Video Output	Composite 1.0Vp-p at 75Ohm	
White Balance	Auto (AWB)	
Gain Control	Auto (AGC)	
Electronic Shutter	Auto (1/50 ~ 1/120000 Sec.)	
Gamma Correction	0.45	
Sync. System	Internal	
IR LED	24 PSC	
IR View Distance	15m	
Lens	3.6mm Board Lens	
Power	DC 12V / 110mA	
Operation Temperature	-10°C ~ 50°C	
Dimension	92W x 69H mm	
Net Weight	310g	



Round design for all directions movement



DOME VARI-FOCAL INFRA RED

DI-325CSVF

DI-355CSVF



B-Black



G-Grey



W-White

Features

- Vari Focal 4~9mm lens included
- Elegant metal case
- 36 IR Leds
- For Day & Night Conditions
- Visible distance at "0" Lux dark (IR on) 25M
- Auto White Balance

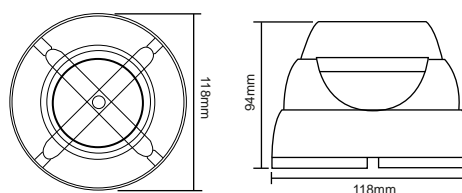


Specifications

MODEL	DI-355CSVF	DI-325CSVF
Image Sensor	1/3" Sony CCD (PAL:ICX639BK/NTSC:ICX638BK)	1/3" Sony CCD (PAL:ICX633BK/NTSC:ICX632BK)
DSP System	CXD3172	CXD3142
TV System	PAL/NTSC	
Effective Pixels	PAL:795(H)x596(V) NTSC:811(H)x508(V)	PAL:537(H)x597(V) NTSC:537(H)x505(V)
Horizontal Resolution	540TVL	420TVL
Minimum Illumination	0.5 LUX (0 Lux IR On)	
S/N Ratio	48db (AGC Off)	
Video Output	Composite 1.0Vp-p at 75Ohm	
White Balance	Auto (AWB)	
Gain Control	Auto (AGC)	
Electronic Shutter	Auto (1/50 ~ 1/120000 Sec.)	
Gamma Correction	0.45	
Sync. System	Internal	
IR LED	36 PSC	
IR View Distance	25m	
Lens	4~9mm Vari-Focal	
Power	DC 12V / 110mA	
Operation Temperature	-10°C ~ 50°C	
Dimension	118W x 94H mm	
Net Weight	730g	



Round design for all directions movement



DOME CORNER MOUNT CAMERA

CM-325CS



B-Black



W-White

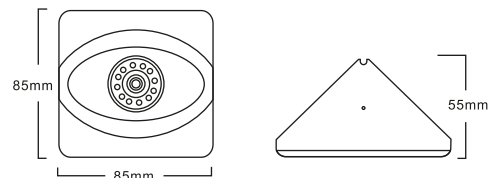
Features

- 1/3" SONY CCD
- For Day & Night conditions
- 12 IR Leds, CDS Sensor Built-In
- Visible distance at dark 10M
- Tamperproof screws



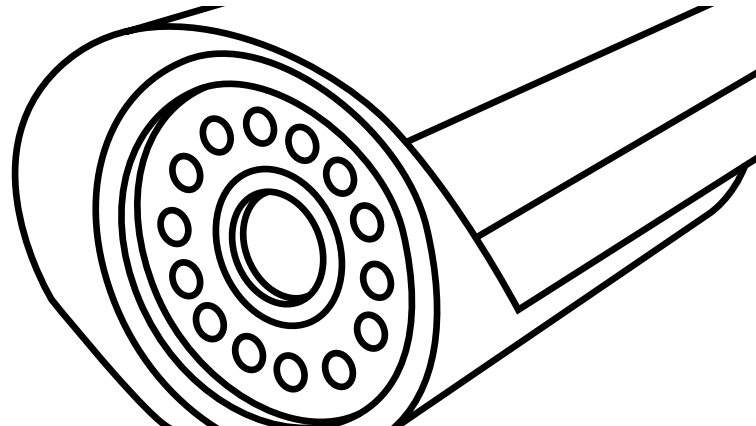
Specifications

MODEL	CM-325CS
Image Sensor	1/3" Sony CCD (PAL:ICX633BK/NTSC:ICX632BK)
DSP System	CXD3142
TV System	PAL/NTSC
Effective Pixels	PAL:537(H)×597(V) / NTSC:537(H)×505(V)
Horizontal Resolution	420TVL
Minimum Illumination	0.5 LUX (0 Lux IR On)
S/N Ratio	48db (AGC Off)
Video Output	Composite 1.0Vp-p at 75Ohm
White Balance	Auto (AWB)
Gain Control	Auto (AGC)
Electronic Shutter	Auto (1/50 ~ 1/120000 Sec.)
Gamma Correction	0.45
Sync. System	Internal
IR LED	12 PSC
IR View Distance	10m
Lens	3.6mm Board Lens
Power	DC 12V / 110mA
Operation Temperature	-10°C ~ 50°C
Dimension	55W x 85H x 85L
Net Weight	130g



INFRA RED CAMERA

Series



IR cameras are designed to capture video during day & night running from normal illumination conditions to complete darkness. What distinguishes the infrared cameras is the IR LED's which allow the camera to "absorb" light waves in IR spectrum that the human eye cannot see.

How does it work?

The IR "hits" the objects and returns to the camera just like the light rays of the sun do and create an image. The lighting distance in the IR cameras is determined by the LEDS quantity, type and quality.

Provision-ISR cameras, are made from the best quality IR LEDs to achieve longer lifetime and maximum reliability along with a bright and clear image.

I1-C



I2-C



I2-U



I3-VF



I4-L



P31 10M CAMERAS

P32 20M CAMERAS

P33 25M CAMERA

P34 40M CAMERA

P35 - 36 30-40M VARI-FOCAL

P37 INFRA RED ILLUMINATORS

INFRA RED 10m CAMERA I1-325CS



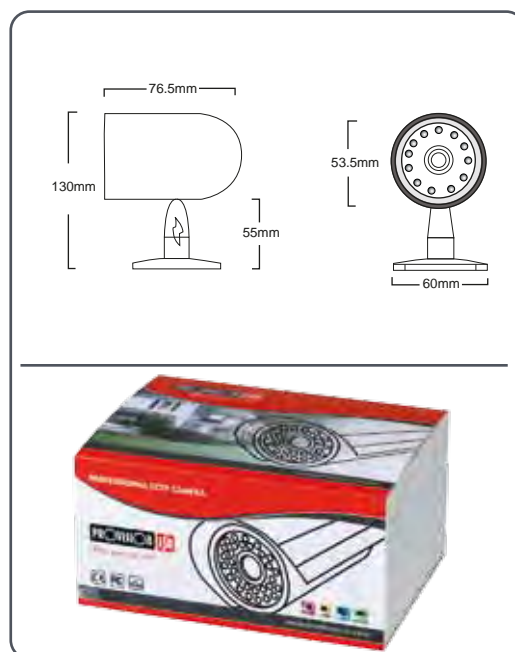
Features

- Day & Night Function
- 12 IR Leds
- Visible distance at 0 Lux dark (IR On) 10m
- Waterproof
- Auto White Balance
- Indoor & Outdoor Applications
- Bracket Included



Specifications

MODEL	I1-325CS
Image Sensor	1/3" Sony CCD (PAL:ICX633BK/NTSC:ICX632BK)
DSP System	CXD3142
TV System	PAL/NTSC
Effective Pixels	PAL:537 (H) x597 (V) NTSC:537 (H) x505 (V)
Horizontal Resolution	420TVL
Minimum Illumination	0.5 LUX (0 Lux IR On)
S/N Ratio	48db (AGC Off)
Video Output	Composite 1.0Vp-p at 75Ohm
White Balance	Auto (AWB)
Gain Control	Auto (AGC)
Electronic Shutter	Auto (1/50 ~ 1/120000 Sec.)
Gamma Correction	0.45
Sync. System	Internal
IR LED	12 PSC
IR View Distance	10m
Lens	3.6mm
Power	DC 12V / 110mA
Operation Temperature	-10°C ~ 50°C
Dimension	76.5L x 60W x 53.5H mm
Net Weight	340g



INFRA RED

20m CAMERA

I2-325CS
I2-355CS



For more information about cases, refer to page 38

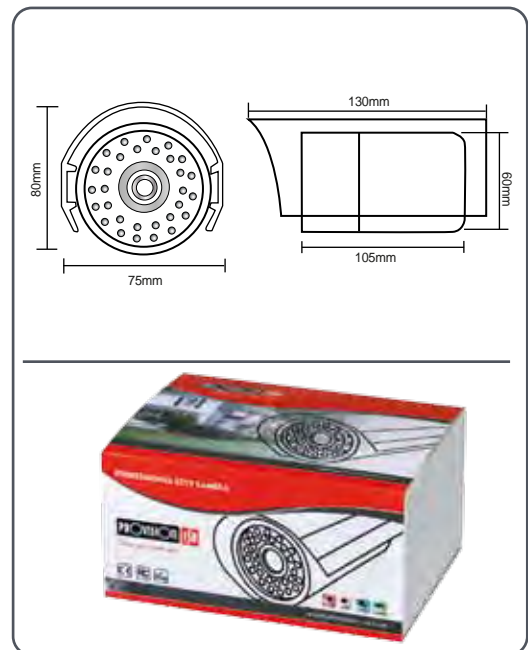
Features

- For Day & Night conditions
- 28 IR Leds
- Visible distance at 0 Lux dark (IR On) 20m
- Waterproof
- Indoor & Outdoor Applications
- Prestigious Aluminum case
- Bracket Included



Specifications

MODEL	I2-355CS	I2-325CS
Image Sensor	1/3" Sony CCD (PAL:ICX639BK/NTSC:ICX638BK)	1/3" Sony CCD (PAL:ICX633BK/NTSC:ICX632BK)
DSP System	CXD3172	CXD3142
TV System	PAL/NTSC	
Effective Pixels	PAL:795(H)x596(V) NTSC:811(H)x508(V)	PAL:537(H)x597(V) NTSC:537(H)x505(V)
Horizontal Resolution	540TVL	420TVL
Minimum Illumination	0.5 LUX (0 Lux IR On)	
S/N Ratio	48db (AGC Off)	
Video Output	Composite 1.0Vp-p at 75Ohm	
White Balance	Auto (AWB)	
Gain Control	Auto (AGC)	
Electronic Shutter	Auto (1/50 ~ 1/100000 Sec.)	
Gamma Correction	0.45	
Sync. System	Internal	
IR LED	R-24PSC / C-28 PSC	
IR View Distance	20m	
Lens	4/6mm	
Power	DC 12V / 350mA	
Operation Temperature	-10°C ~ 50°C	
Dimension	130L x 75W x 80H mm	
Net Weight	430g	



INFRA RED 25M CAMERA

I2-325CS(U)

I2-355CS(U)



Features

- For Day & Night conditions
- 36 IR Leds
- Visible distance at 0 Lux dark (IR On) 25m
- Waterproof
- Indoor & Outdoor Applications
- Prestigious Aluminum case
- Bracket Included



Specifications

MODEL	I2-355CS(U)	I2-325CS(U)
Image Sensor	1/3" Sony CCD (PAL:ICX639BK/NTSC:ICX638BK)	1/3" Sony CCD (PAL:ICX633BK/NTSC:ICX632BK)
DSP System	CXD3172	CXD3142
TV System	PAL/NTSC	
Effective Pixels	PAL:795(H)×596(V) NTSC:811(H)×508(V)	PAL:537(H)×597(V) NTSC:537(H)×505(V)
Horizontal Resolution	540TVL	420TVL
Minimum Illumination	0.5 LUX (0 Lux IR On)	
S/N Ratio	48db (AGC Off)	
Video Output	Composite 1.0Vp-p at 75Ohm	
White Balance	Auto (AWB)	
Gain Control	Auto (AGC)	
Electronic Shutter	Auto (1/50 ~ 1/100000 Sec.)	
Gamma Correction	0.45	
Sync. System	Internal	
IR LED	36 PSC	
IR View Distance	25m	
Lens	4/6mm	
Power	DC 12V / 350mA	
Operation Temperature	-10°C ~ 50°C	
Dimension	161L x 82W x 78H mm	
Net Weight	770g	



INFRA RED 40m CAMERA

I4-325CS
I4-355CS



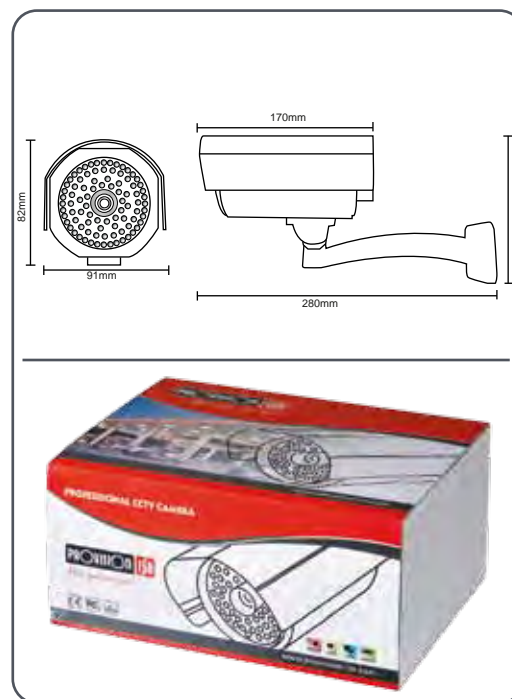
Features

- For Day & Night conditions
- 64 IR Leds
- Visible distance at 0 Lux dark (IR On) 40m
- Waterproof
- Indoor & Outdoor Applications
- Prestigious case



Specifications

MODEL	I4-355CS	I4-325CS
Image Sensor	1/3" Sony CCD (PAL:ICX639BK/NTSC:ICX638BK)	1/3" Sony CCD (PAL:ICX633BK/NTSC:ICX632BK)
DSP System	CXD3172	CXD3142
TV System	PAL/NTSC	
Effective Pixels	PAL:795(H)x596(V) NTSC:811(H)x508(V)	PAL:537(H)x597(V) NTSC:537(H)x505(V)
Horizontal Resolution	540TVL	420TVL
Minimum Illumination	0.5 LUX (0 Lux IR On)	
S/N Ratio	48db (AGC Off)	
Video Output	Composite 1.0Vp-p at 75Ohm	
White Balance	Auto (AWB)	
Gain Control	Auto (AGC)	
Electronic Shutter	Auto (1/50 ~ 1/100000 Sec.)	
Gamma Correction	0.45	
Sync. System	Internal	
IR LED	64 PSC	
IR View Distance	40m	
Lens	6/8/12mm	
Power	DC 12V/550mA	
Operation Temperature	-10°C ~ 50°C	
Dimension	138L x 89W x 89H mm	
Net Weight	970g	



INFRA RED 30M VARI-FOCAL

I3-325CSVF

I3-355CSVF



Features

- Vari-focal 4-9mm Lens included
- 36 IR Leds, Visible distance at 0 Lux dark (IR On) 30m
- Anti-cutting cable bracket
- Waterproof
- CDS Sensor Built-In
- Indoor & Outdoor Application
- Friendly mechanism to adjust the lens



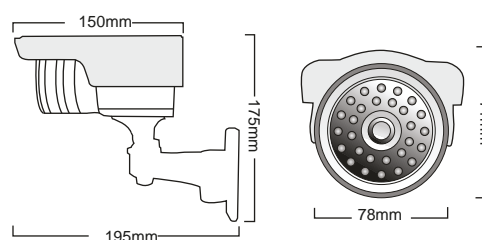
Specifications

MODEL	I3-355CSVF	I3-325CSVF
Image Sensor	1/3" Sony CCD (PAL:ICX639BK/NTSC:ICX638BK)	1/3" Sony CCD (PAL:ICX633BK/NTSC:ICX632BK)
DSP System	CXD3172	CXD3142
TV System	PAL/NTSC	
Effective Pixels	PAL:795(H)x596(V) NTSC:811(H)x508(V)	PAL:537(H)x597(V) NTSC:537(H)x505(V)
Horizontal Resolution	540TVL	420TVL
Minimum Illumination	0.5 LUX (0 Lux IR On)	
S/N Ratio	48db (AGC Off)	
Video Output	Composite 1 0Vp-p at 75Ohm	
White Balance	Auto (AWB)	
Gain Control	Auto (AGC)	
Electronic Shutter	Auto (1/50 ~ 1/120000 Sec.)	
Gamma Correction	0.45	
Sync. System	Internal	
IR LED	36 PSC	
IR View Distance	30m	
Lens	4-9mm Vari-Focal	
Power	DC 12V / 350mA	
Operation Temperature	-10°C ~ 50°C	
Dimension	195L x 78W x 175H mm	
Net Weight	810g	

Case C Rear View



Vari-Focal Adjustment



INFRA RED

40m

VARI-FOCAL

I4-325CSVF
I4-355CSVF



Features

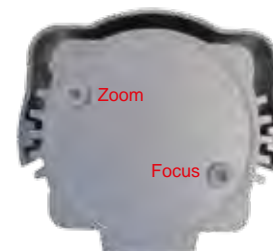
- Vari-focal 4-9mm Lens included
- 72 IR Leds, Visible distance at 0 Lux dark (IR On) 40m
- Anti-cutting cable bracket
- Waterproof
- CDS Sensor Built-In
- Indoor & Outdoor Application
- Friendly mechanism to adjust the lens



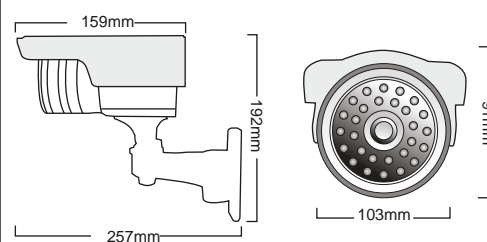
Specifications

MODEL	I4-355CSVF	I4-325CSVF
Image Sensor	1/3" Sony CCD (PAL:ICX639BK/NTSC:ICX638BK)	1/3" Sony CCD (PAL:ICX633BK/NTSC:ICX632BK)
DSP System	CXD3172	CXD3142
TV System	PAL/NTSC	
Effective Pixels	PAL:795(H)x596(V) NTSC:811(H)x508(V)	PAL:537(H)x597(V) NTSC:537(H)x505(V)
Horizontal Resolution	540TVL	420TVL
Minimum Illumination	0.5 LUX (0 Lux IR On)	
S/N Ratio	48db (AGC Off)	
Video Output	Composite 1 0Vp-p at 75Ohm	
White Balance	Auto (AWB)	
Gain Control	Auto (AGC)	
Electronic Shutter	Auto (1/50 ~ 1/120000 Sec.)	
Gamma Correction	0.45	
Sync. System	Internal	
IR LED	C-72PSC / VE-36 PSC	
IR View Distance	40m	
Lens	4~9mm Vari-Focal	
Power	DC 12V / 650mA	
Operation Temperature	-10°C ~ 50°C	
Dimension	257L x 103W x 192H mm	
Net Weight	960g	

Case C Rear View



Vari-Focal Adjustment



INFRA RED ILLUMINATOR

I5-LED



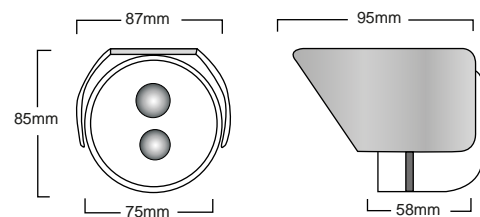
Features

- 2 Long Range Led Array Technology
- Input voltage DC 12V
- IR Range 50m
- Waterproof
- Indoor & Outdoor Applications



Specifications

MODEL	I5-LED
IR Led	2 Super Long Range IR Led
IR View Distance	50m
Power	DC12V/500mA
Operation Temperature	-10°C ~ 50°C
Dimension	95L x 87W x 85H mm
Net Weight	560g



INFRA RED CASES

I1

Type S

- 12 PCS Leds
- 10 mt IR View
- Lens options: 3.6mm



Type C

- 12 PCS Leds
- 10 mt IR View
- Lens options: 3.6mm



I2



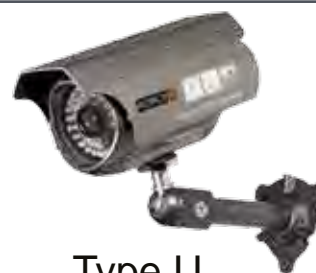
Type R

- 24 PCS Leds
- 20 mt IR View
- Lens options: 4/6mm



Type C

- 28 PCS Leds
- 20 mt IR View
- Lens options: 4/6mm



Type U

- 36 PCS Leds
- 25 mt IR View
- Lens options: 4/6mm

I3

Type VE

- 36 PCS Leds
- 30 mt IR View
- 4-9mm Vari-Focal Lens



Type C

- 36 PCS Leds
- 30 mt IR View
- 4-9mm Vari-Focal Lens



I4



Type L

- 64 PCS Leds
- 40 mt IR View
- Lens options: 6/8/12mm



Type VE

- 36 Big Leds
- 40 mt IR View
- 4-9mm Vari-Focal Lens



Type C

- 72 PCS Leds
- 40 mt IR View
- 4-9mm Vari-Focal Lens

LED ARRAY CAMERA

Series



Our new IR camera series using LED ARRAY technology- the latest Infra Red Technology and the most efficient one. The New LED ARRAY technology has many advantages compared with the traditional IR LED.

- **Higher Brightness**

Single LED ARRAY used in Provision-ISR cameras are equal to over 100 traditional Led's and insure brighter and clearer image than ever during night time.

- **Longer illumination Distance**

Due to the Led Array's outstanding illumination Power, using a single led can light objects in a distance of 50 Meter.

- **Longer Life-time**

While Normal Led life time is approximately 10,000 hours (3 years of work) the new LED ARRY can last 5 times longer.

- **Lower Power consumption**

Compared to the Traditional Led, the LED Array's power consumption is X3 time lower

- **EX-Military**

LED Array Technology was used before in Military applications, only recently due to prices decreasing it is now more often used in Normal civilian uses. Its "Military background" insures the technology resistance and reliability.

RX



U



LK



P40 25M CAMERA

P41 30M CAMERA

P40 40-60M CAMERA

LED ARRAY 25M CAMERA

I2s-320CS

I2s-350CS



Features

- For Day & Night conditions
- Visible distance at 0 Lux dark (IR On) 25m
- Waterproof
- Indoor & Outdoor Applications
- Prestigious Aluminum case
- 3 Axis Bracket



Specifications

MODEL	I2s-350CS	I2s-320CS
Image Sensor	1/3" Sony CCD (PAL:ICX639BK/NTSC:ICX638BK)	1/3" Sony CCD (PAL:ICX633BK/NTSC:ICX632BK)
DSP System	CXD3172	CXD3142
TV System	PAL/NTSC	
Effective Pixels	PAL:795(H)x596(V) NTSC:811(H)x508(V)	PAL:537(H)x597(V) NTSC:537(H)x505(V)
Horizontal Resolution	540TVL	420TVL
Minimum Illumination	0.5 LUX (0 Lux IR On)	
S/N Ratio	48db (AGC Off)	
Video Output	Composite 1.0Vp-p at 75Ohm	
White Balance	Auto (AWB)	
Gain Control	Auto (AGC)	
Electronic Shutter	Auto (1/50 ~ 1/100000 Sec.)	
Gamma Correction	0.45	
Sync. System	Internal	
IR LED	Single Led Array 90°	
IR View Distance	25m	
Lens	3.6mm	
Power	DC 12V / 440mA	
Operation Temperature	-10°C ~ 50°C	
Dimension	160L x 75W x 96H mm	
Net Weight	340g	



LED ARRAY 30M CAMERA

I2s-320CS(U)

I2s-350CS(U)



Features

- For Day & Night conditions
- Visible distance at 0 Lux dark (IR On) 30m
- Waterproof
- Indoor & Outdoor Applications
- Prestigious Aluminum case
- 3 Axis Bracket



Specifications

MODEL	I2s-350CS	I2s-320CS
Image Sensor	1/3" Sony CCD (PAL:ICX639BK/NTSC:ICX638BK)	1/3" Sony CCD (PAL:ICX633BK/NTSC:ICX632BK)
DSP System	CXD3172	CXD3142
TV System	PAL/NTSC	
Effective Pixels	PAL:795(H)x596(V) NTSC:811(H)x508(V)	PAL:537(H)x597(V) NTSC:537(H)x505(V)
Horizontal Resolution	540TVL	420TVL
Minimum Illumination	0.5 LUX (0 Lux IR On)	
S/N Ratio	48db (AGC Off)	
Video Output	Composite 1.0Vp-p at 75Ohm	
White Balance	Auto (AWB)	
Gain Control	Auto (AGC)	
Electronic Shutter	Auto (1/50 ~ 1/100000 Sec.)	
Gamma Correction	0.45	
Sync. System	Internal	
IR LED	Single Led Array 90°	
IR View Distance	30m	
Lens	6mm	
Power	DC 12V / 440mA	
Operation Temperature	-10°C ~ 50°C	
Dimension	161L x 82W x 78H mm	
Net Weight	770g	



LED ARRAY 40~60m CAMERA

I4s-320CS

I4s-350CS



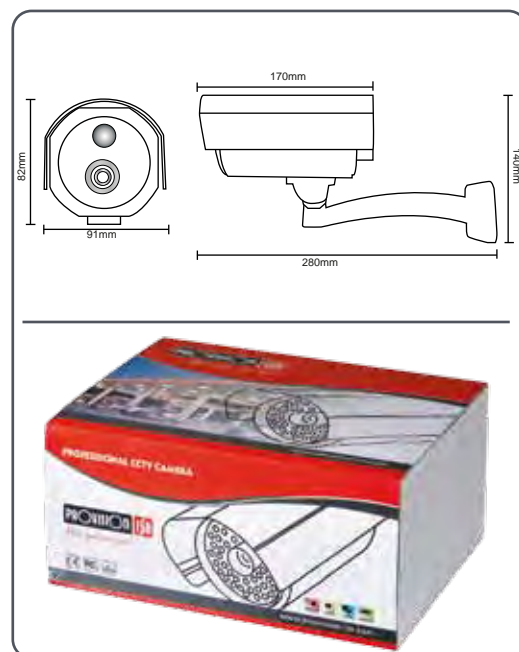
Features

- For Day & Night conditions
- CS Mount Mega Pixel Lens
- Visible distance at 0 Lux dark (IR On) 40~60m
- Waterproof
- Indoor & Outdoor Applications
- Prestigious case



Specifications

MODEL	I4s-350CS	I4s-320CS
Image Sensor	1/3" Sony CCD (PAL:ICX639BK/NTSC:ICX638BK)	1/3" Sony CCD (PAL:ICX633BK/NTSC:ICX632BK)
DSP System	CXD3172	CXD3142
TV System	PAL/NTSC	
Effective Pixels	PAL:795(H)×596(V) NTSC:811(H)×508(V)	PAL:537(H)×597(V) NTSC:537(H)×505(V)
Horizontal Resolution	540TVL	420TVL
Minimum Illumination	0.5 LUX (0 Lux IR On)	
S/N Ratio	48db (AGC Off)	
Video Output	Composite 1.0Vp-p at 75Ohm	
White Balance	Auto (AWB)	
Gain Control	Auto (AGC)	
Electronic Shutter	Auto (1/50 ~ 1/100000 Sec.)	
Gamma Correction	0.45	
Sync. System	Internal	
IR LED	Single Led Array 45°/30°/15°	
IR View Distance	40~60m	
Lens	8/12/16mm	
Power	DC 12V/ 440mA	
Operation Temperature	-10°C ~ 50°C	
Dimension	138L x 89W x 89H mm	
Net Weight	970g	



AUTO-SYNC FOCUS CAMERA

Series



In Today's world where "Time is money" . Many times the cost of the installation is higher than the Hardware cost, therefor we face an increasing demand for a "time saver" and a "easy installation" CCTV product.

Provision-ISR designed a new generation of "Auto-Sync focus" cameras to make camera installation simpler than ever.

The " ASF " cameras are using an "electrical Auto-sync lens" which focused automatically. The lens focal can be controlled easily from the camera cable or by RS-485 from the DVR for zoom adjustment. All you need to do is "zoom in" or "zoom out" - the focus will be fixed automatically according to the required zoom position!

I3-360CSAS



I4-360CSAS



DI-360CSAS



P45 DOME IR CAMERA

P46 INFRA RED CAMERA

P47 INFRA RED CAMERA

Auto-Sync Focus

Easier installation ever...

Our latest Auto-Sync Focus camera series designed to deliver excellent performance and image quality with outstanding friendly installation.

Auto-Sync Focus Cameras Main Features:

- 600 TVL resolution
- OSD control
- RS-485 control
- HLC-Headlights compensation
- 2D-DNR (Digital Noise Reduction)
- Auto-Sync focus lens
- Intelligent IR (IR Cameras)
- Motion detection
- Digital WDR
- Privacy masking

• Auto-Sync lens

Auto-Sync lens controlled by both Camera cable or RS-485.

Unlike the traditional vari-focal camera, which need to be adjusted manually, Auto-Sync new vari-focal cameras are automatically adjust. We designed the camera so that the lens can be adjust in 2 different ways for maximum installation convenience-

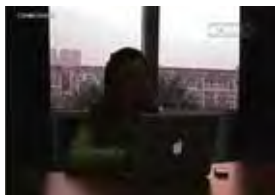


- Remotely:
By Rs-485 control,
from your DVR
or PTZ controler.



- Locally:
From the camera cable for zoom control or by
using our "9 keys controller" for full camera
functions control including zoom and OSD.

Conventional DSP



Auto-Sync Focus

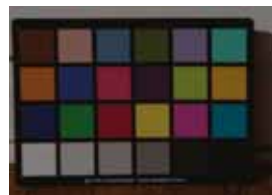


• D-WDR

Conventional DSP



Auto-Sync Focus



• 2D-DNR

Keeping the image sharp-clear from noises even under low light.

Conventional DSP



Auto-Sync Focus



• HLC-Headlights compensation



• Advanced Motion detection



• OSD Menu



• 600TVL

AUTO SYNC FOCUS DOME IR CAMERA

DI-360CSAS



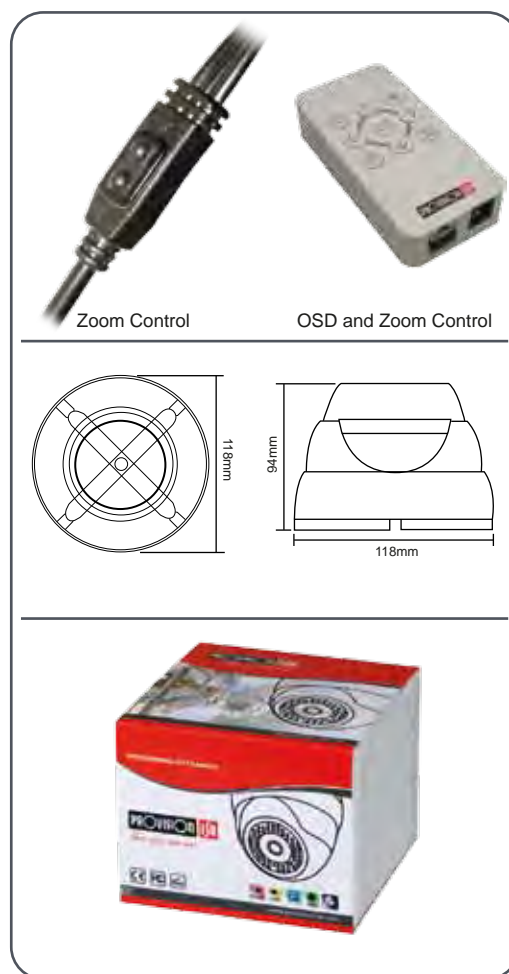
Features

- 4-9mm Auto sync. lens
- Day & night function, 25m IR Distance
- 600TV Lines
- 2D-DNR
- Digital WDR
- OSD control
- RS-485 for OSD and lens control



Specifications

MODEL	DI-360CSAS
Image Sensor	1/3" SONY ICX639BK CCD
Horizontal Resolution	600TV Lines
Effective Pixels	PAL: 795 (H) × 596 (V) NTSC: 811 (H) × 508 (V)
Minimum Illumination	0.01Lux/F2.0 (0 Lux IR On)
TV System	PAL/NTSC
IR LED	φ5 X36PCS
IR Series Distance	25M
Lens	4-9mm Auto sync. lens
Sync System	Internal
OSD Menu	Available (DWDR, 2D-DNR, Motion Detect, HLC)
S/N Ratio	≥50dB (AGC OFF)
Gamma Correction	0.45
Video Out	Composite Signal (1.0Vp-p, 75Ω)
Electronic Shutter Time	Auto: PAL 1/50-1/100,000Sec; NTSC 1/60-1/100,000Sec
Operation Temperature	-10°C ~ +50°C RH95% Max
Storage Temperature	-20°C ~ +60°C RH95% Max
White Balance	Auto
Power	DC12V 400mA
Dimension	φ118 × 94(H) mm
Weight	730g
Water resistance	IP66



AUTO SYNC FOCUS INFRA RED CAMERA

I3-360CSAS



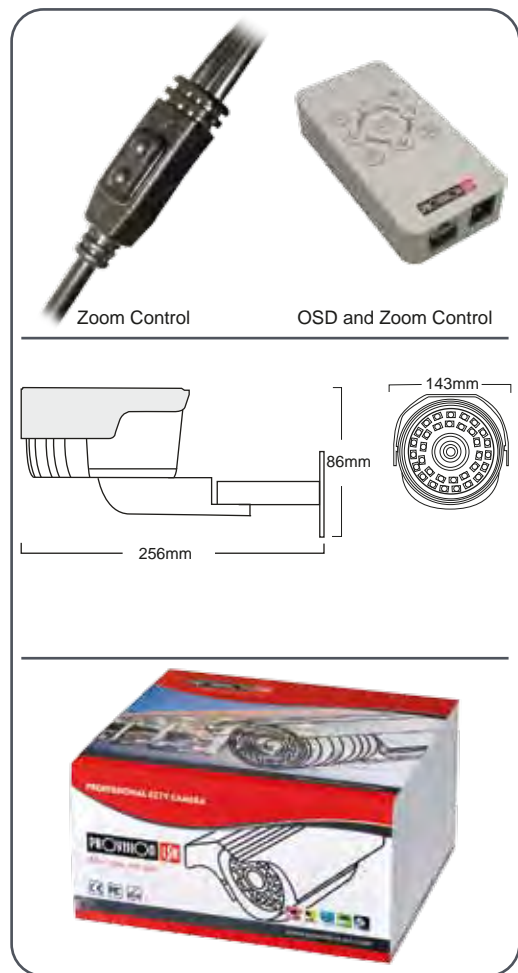
Features

- 4-9mm Auto sync. lens
- 3 Axis Bracket
- Day & night function, 30m IR Distance
- 600TV Lines
- 2D-DNR
- Digital WDR
- OSD control
- RS-485 for OSD and lens control



Specifications

MODEL	I3-360CSAS
Image Sensor	1/3" SONY ICX639BK CCD
Horizontal Resolution	600TV Lines
Effective Pixels	PAL: 795 (H) × 596 (V) NTSC: 811 (H) × 508 (V)
Minimum Illumination	0.01Lux/F2.0 (0 Lux IR On)
TV System	PAL/NTSC
IR LED	ø5 X36PCS
IR Series Distance	30M
Lens	4-9mm Auto sync. lens
Sync System	Internal
OSD Menu	Available (DWDR, 2D-DNR, Motion Detect, HLC)
S/N Ratio	≥50dB (AGC OFF)
Gamma Correction	0.45
Video Out	Composite Signal (1.0Vp-p, 75Ω)
Electronic Shutter Time	Auto: PAL 1/50-1/100,000Sec; NTSC 1/60-1/100,000Sec
Operation Temperature	-10°C ~ +50°C RH95% Max
Storage Temperature	-20°C ~ +60°C RH95% Max
White Balance	Auto
Power	DC12V 400mA
Dimension	256Lx143Wx86H mm
Weight	820g
Water resistance	IP66



AUTO SYNC FOCUS INFRA RED CAMERA

I4-360CSAS



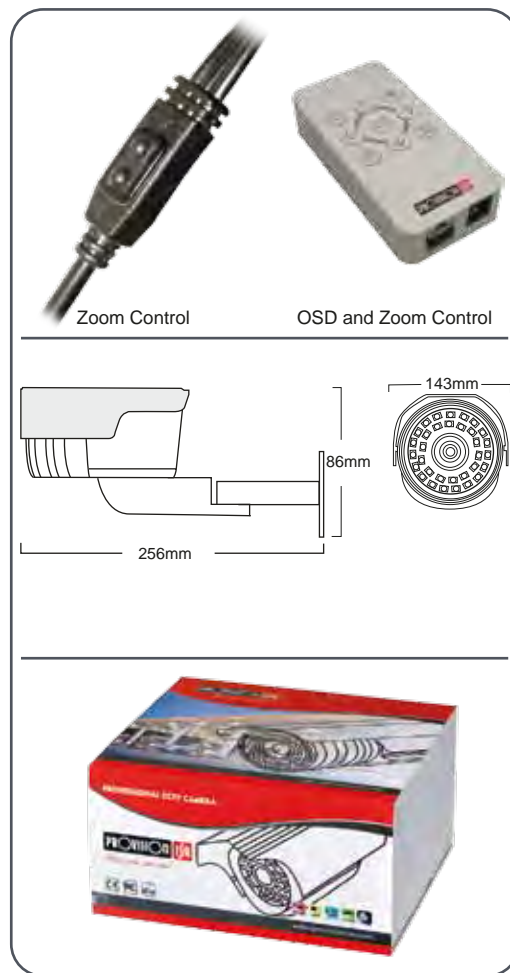
Features

- 4-9mm Auto sync. lens
- 3 Axis Bracket
- Day & night function, 40m IR Distance
- 600TV Lines
- 2D-DNR
- Digital WDR
- OSD control
- RS-485 for OSD and lens control



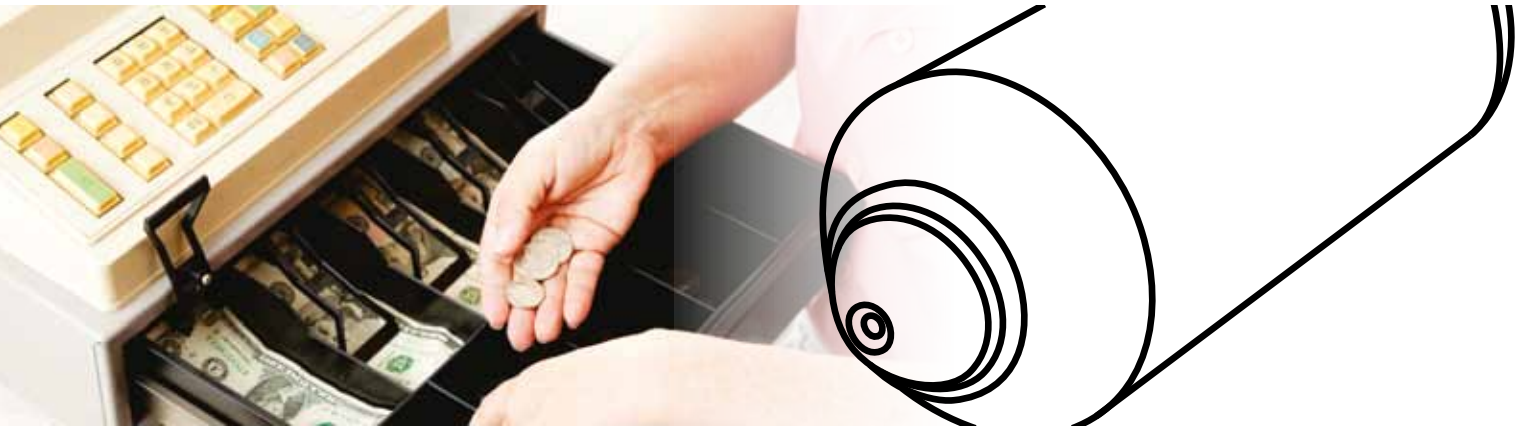
Specifications

MODEL	I4-360CSAS
Image Sensor	1/3" SONY ICX639BK CCD
Horizontal Resolution	600TV Lines
Effective Pixels	PAL: 795 (H) × 596 (V) NTSC: 811 (H) × 508 (V)
Minimum Illumination	0.01Lux/F2.0 (0 Lux IR On)
TV System	PAL/NTSC
IR LED	φ8X36PCS
IR Series Distance	40M
Lens	4-9mm Auto sync. lens
Sync System	Internal
OSD Menu	Available (DWDR, 2D-DNR, Motion Detect, HLC)
S/N Ratio	≥50dB (AGC OFF)
Gamma Correction	0.45
Video Out	Composite Signal (1.0Vp-p, 75Ω)
Electronic Shutter Time	Auto: PAL 1/50-1/100,000Sec; NTSC 1/60-1/100,000Sec
Operation Temperature	-10°C ~ +50°C RH95% Max
Storage Temperature	-20°C ~ +60°C RH95% Max
White Balance	Auto
Power	DC12V 400mA
Dimension	259(W)x159(H)x104(D)mm
Weight	820g
Water resistance	IP66



HIDDEN CAMERA

Series



Hidden cameras are compact in size and used for covert monitoring. They allow us to record, monitor and control the environment while going unnoticed. They are usually installed in public places like department stores, theatres, clubs, etc, or on the private sector for home use- babysitter, house keeper etc.

It can come in different shapes - PIR detector, SMOKE detector, MIRROR, and much more...

Provision-ISR Hidden cameras are designed in a way that it will be compact and easy to be integrated with standard home/office environments without attracting attention, but at the same time delivering a superior video quality.



P 49-50 MINI CAMERAS

P 51-52 BULLET CAMERAS

P 53-55 PIR CAMERAS

P 56 SPOT LIGHT CAMERA

P 57 SMOKE DETECTOR CAMERA

P 58 NETWORK SOCKET CAMERA

P 59 SPRINKLER CAMERA

P 60 MIRROR CAMERA

HIDDEN mini CAMERA

MC-425CS

MC-322CS

MC-352CS



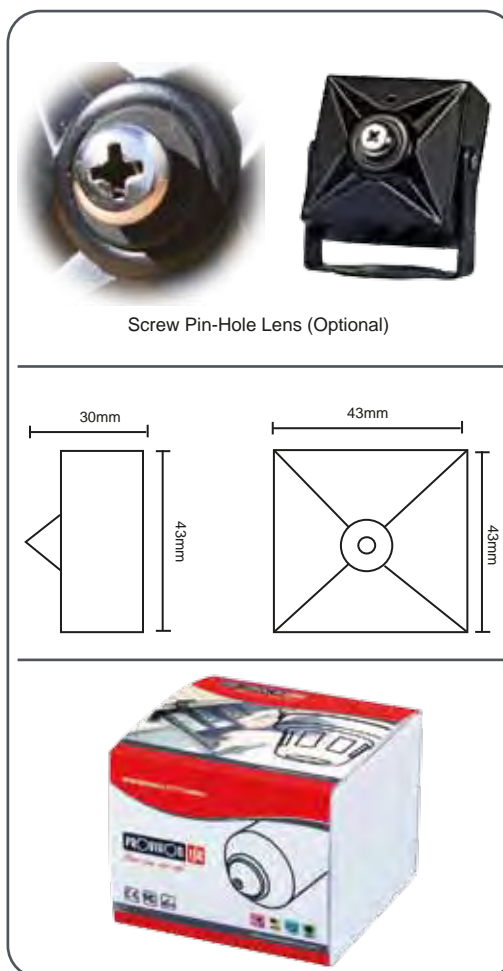
Features

- 1/3" SONY CCD
- Miniature Hidden camera
- Built-in Pin-Hole Lens
- Compact size and beautiful design
- Auto White Balance
- Easy installation



Specifications

MODEL	MC-352CS	MC-322CS	MC-425CS
Image Sensor	1/3" Sony CCD (PAL:ICX639BK NTSC:ICX638BK)	1/3" Sony CCD (PAL:ICX633BK NTSC:ICX632BK)	1/4" Sony CCD (PAL:ICX227BK NTSC:ICX226BK)
DSP System	CXD3172	CXD3142	
TV System	PAL/NTSC		
Effective Pixels	PAL:795(H)×596(V) NTSC:811(H)×508(V)	PAL:537(H)×597(V) NTSC:537(H)×505(V)	
Horizontal Resolution	540TVL	420TVL	
Minimum Illumination	0.05 LUX	0.1 LUX	0.5 LUX
S/N Ratio	48db (AGC Off)		
Video Output	Composite 1 0Vp-p at 75Ohm		
White Balance	Auto (AWB)		
Electronic Shutter	Auto (1/50 ~ 1/120000 Sec.)		
Gamma Correction	0.45		
Sync. System	Internal		
Gain Control	Auto (AGC)		
Lens	2.8/3.7mm Pin-Hole / 6mm Screw Lens		
Power	DC12V/180mA		
Operation Temperature	-10℃ ~ 50℃		
Dimension	43L x 30W x 43H mm		
Net Weight	90g		



HIDDEN SNAKE CAMERA

MW-325CS

MW-425CS



Features

- Miniature Hidden Camera
- Allows to Perform Detailed Visual Inspection in Hard to Reach Areas.
- Look Around Corners & Under Doors
- Audio



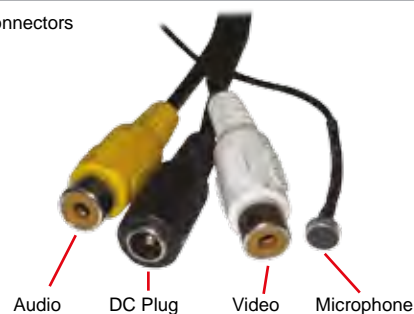
Specifications

MODEL	MW-325CS	MW-425CS
Image Sensor	1/3" Sony CCD (PAL:ICX633BK/NTSC:ICX632BK)	1/4" Sony CCD (PAL:ICX643BK/NTSC:ICX642BK)
DSP System	CXD3142	
TV System	PAL/NTSC	
Effective Pixels	PAL:500 (H) × 582 (V) NTSC:510 (H) × 492 (V)	
Horizontal Resolution	420TVL	
Minimum Illumination	0.01 LUX/F1.2	0.5 LUX/F1.2
S/N Ratio	48db (AGC Off)	
Video Output	Composite 1.0Vp-p at 75Ohm	
White Balance	Auto (AWB)	
Electronic Shutter	Auto (1/50 ~ 1/120000 Sec.)	
Gamma Correction	0.45	
Sync. System	Internal	
Gain Control	Auto (AGC)	
Lens	3.7mm pin-hole lens	
Power	DC12V/100mA	
Operation Temperature	-10°C ~ 50°C	
Dimension	15 x 15 mm	12 x 12 mm
Net Weight	70g	

Lens Type



Connectors



HIDDEN BULLET CAMERA

MP-325CS(PH)



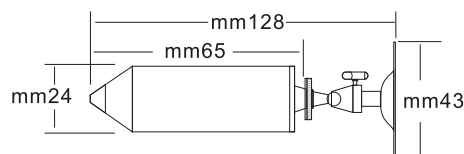
Features

- 1/3" SONY CCD
- Built-in Pin Hole Lens
- Compact size and beautiful design
- Auto White Balance
- Easy installation



Specifications

MODEL	MP-325CS(PH)
Image Sensor	1/3" Sony CCD (PAL:ICX633BK/NTSC:ICX632BAK)
DSP System	CXD3142
TV System	PAL/NTSC
Effective Pixels	PAL:537(H)×597(V) / NTSC:537(H)×505(V)
Horizontal Resolution	420TVL
Minimum Illumination	0.5 LUX/F1.2
S/N Ratio	48db (AGC Off)
Video Output	Composite 1.0Vp-p at 75ohm
White Balance	Auto (AWB)
Electronic Shutter	Auto (1/50 ~ 1/120000 Sec.)
Gamma Correction	0.45
Sync. System	Internal
Gain Control	Auto (AGC)
Lens	3.7mm Pin-Hole
Power	DC12V/180mA
Operation Temperature	-10°C ~ 50°C
Dimension	100L x 42W x 23H mm
Net Weight	140g



HIDDEN DOOR CAMERA

MD-425CS



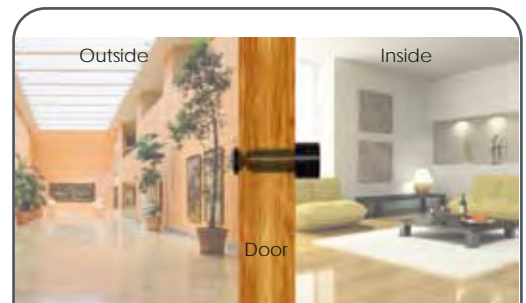
Features

- 1/4" SONY CCD
- Door Piphole Camera
- 170° Fish-eye Lens
- Adjustable length according to the door thickness



Specifications

MODEL	MD-425CS
Image Sensor	1/4" Sony CCD (PAL:ICX227BK/NTSC:ICX226BAK)
DSP System	CXD3142
TV System	PAL/NTSC
Effective Pixels	PAL:500H x 582V / NTSC:510H x 492V
Horizontal Resolution	420TVL
Minimum Illumination	0.5 LUX/F1.2
S/N Ratio	50db (AGC Off)
Video Output	Composite 1.0Vp-p at 75ohm
White Balance	Auto (AWB)
Electronic Shutter	Auto (1/50 ~ 1/100000 Sec.)
Gamma Correction	0.45
Sync. System	Internal
Gain Control	Auto (AGC)
Lens	1.78mm Fix lens
Power	DC12V / 100mA or less
Operation Temperature	-10°C ~ 50°C
Dimension	95/127L x 32H mm
Net Weight	100g



Adjustable length according to the door thickness.



HIDDEN PIR CAMERA

MV-425CS

MV-322CS

MV-352CS



Features

- Miniature Hidden camera
- Built-in Pin-Hole Lens
- Flickering red light, for more authentic look
- Compact size and beautiful design
- Auto White Balance

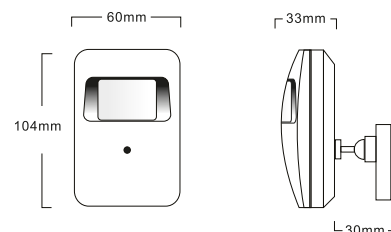


Specifications

MODEL	MV-352CS	MV-322CS	MV-425CS
Image Sensor	1/3" Sony CCD (PAL:ICX639BK NTSC:ICX638BK)	1/3" Sony CCD (PAL:ICX633BK NTSC:ICX632BK)	1/4" Sony CCD (PAL:ICX643BK NTSC:ICX642BK)
DSP System	CXD3172	CXD3142	
TV System	PAL/NTSC		
Effective Pixels	PAL:795(H)x596(V) NTSC:811(H)x508(V)	PAL:537(H)x597(V) NTSC:537(H)x505(V)	
Horizontal Resolution	540TVL	420TVL	
Minimum Illumination	0.05 LUX	0.1 LUX	0.5 LUX
S/N Ratio	48db (AGC Off)		
Video Output	Composite 1 0Vp-p at 75Ohm		
White Balance	Auto (AWB)		
Electronic Shutter	Auto (1/50 ~ 1/120000 Sec.)		
Gamma Correction	0.45		
Sync. System	Internal		
Gain Control	Auto (AGC)		
Lens	3.7mm Pinhole lens		
Power	DC12V/180mA		
Operation Temperature	-10°C ~ 50°C		
Dimension	33L x 60W x 104H mm		
Net Weight	110g		



Blinking Red Led for Authentic look



HIDDEN INFRA RED PIR CAMERA

IV-425CS

IV-322CS

IV-352CS



Features

- Built-in Hidden IR Leds
- 18 IR Leds for 10mt
- For Day & Night Conditions
- Miniature Hidden camera
- Built-in Pin-Hole Lens
- Auto White Balance

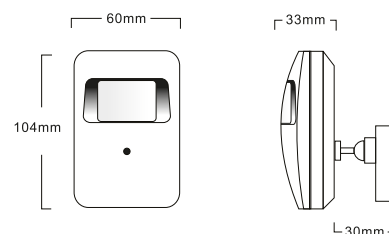


Specifications

MODEL	IV-352CS	IV-322CS	IV-425CS
Image Sensor	1/3" Sony CCD (PAL:ICX639BK NTSC:ICX638BK)	1/3" Sony CCD (PAL:ICX633BK NTSC:ICX632BK)	1/4" Sony CCD (PAL:ICX643BK NTSC:ICX642BK)
DSP System	CXD3172	CXD3142	
TV System	PAL/NTSC		
Effective Pixels	PAL:795(H)x596(V) NTSC:811(H)x508(V)	PAL:537(H)x597(V) NTSC:537(H)x505(V)	
Horizontal Resolution	540TVL	420TVL	
Minimum Illumination	0.05 LUX	0.1 LUX	0.5 LUX
S/N Ratio	48db (AGC Off)		
Video Output	Composite 1.0Vp-p at 75Ohm		
White Balance	Auto (AWB)		
Gain Control	Auto (1/50 ~ 1/120000 Sec.)		
Backlight Compensation	Adjustable		
Electronic Shutter	Auto (AGC)		
Gamma Correction	0.45		
Sync. System	Internal		
IR LED	18 PSC		
IR View Distance	10m		
Lens	3.7mm Pinhole lens		
Power	DC12V/180mA		
Operation Temperature	-10°C ~ 50°C		
Dimension	33L x 60W x 104H mm		
Net Weight	110g		



HIDDEN
IR LED'S



HIDDEN ACTIVE PIR DETECTOR CAMERA

AV-322CS



Features

- Mounted in a functional PIR motion detector housing
- Equipped with a built in balun
- Built-in Pin-Hole Lens
- Using Single CAT5 Cable for Video Power, Alarm, Transmission

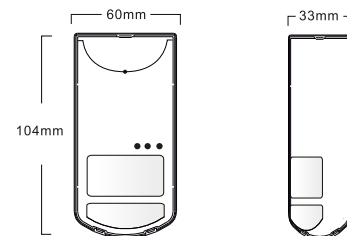


Camera Specifications

MODEL	AV-322CS
Image Sensor	1/3" Sony CCD (PAL:ICX633BK/NTSC:ICX632BAK)
DSP System	CXD3142
TV System	PAL/NTSC
Effective Pixels	PAL:537(H)×597(V) / NTSC:537(H)×505(V)
Horizontal Resolution	420TVL
Minimum Illumination	0.1 LUX/F1.2
S/N Ratio	48db (AGC Off)
Video Output	Composite 1.0Vp-p at 75Ohm
White Balance	Auto (AWB)
Electronic Shutter	Auto (1/50 ~ 1/120000 Sec.)
Gamma Correction	0.45
Sync. System	Internal
Gain Control	Auto (AGC)
Lens	3.7mm Pinhole lens
Power	DC12V/180mA
Operation Temperature	-10°C ~ 50°C
Dimension	33L x 60W x 104H mm
Net Weight	170g

Alarm Specifications

Working Voltage	DC9 ~ 16V
Supply	≤ 30mA
Detecting range	12m * 12m
Warm uptime	≤ 60s
Detecting mode	Dopper + Power analysis
Sensor	Dual noise PIR
Installation method	Wall mounted
Installation height	About 2.2m
Working temperature	-10°C ~ 50°C
Terminal block	A LAM, GND, +12V, TAMPER
Relay output	N.C / N.O. optional, 28VDC, 80mA
Anti-tamper switch	N.C. without voltage output, 28VDC, 100mA



HIDDEN SPOT LIGHT CAMERA

DL-325CS

DL-355CS



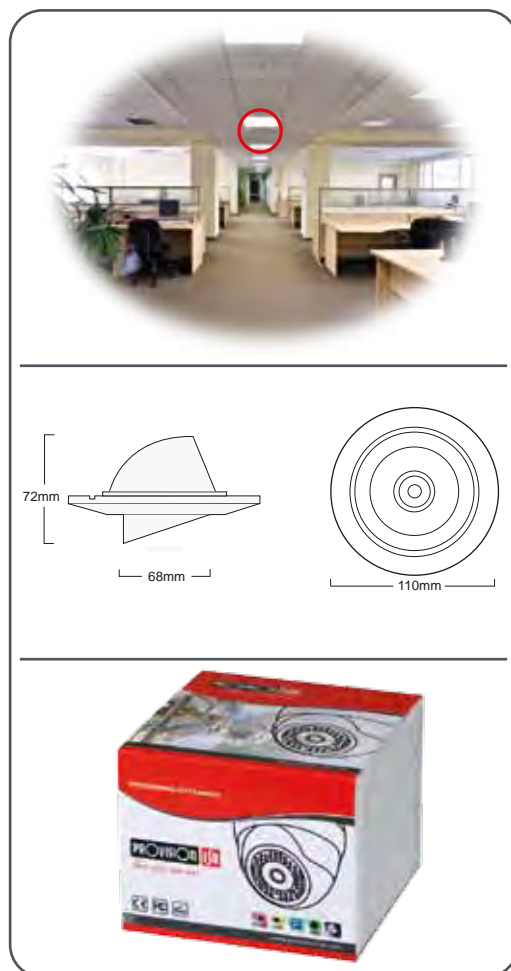
Features

- SONY CCD
- Spot Light Style Camera
- Elegant and Compact design
- Robust metal Armor Housing Aluminum ring
- Day & Night Function
- 12 IR Leds, Visible distance at 0 Lux dark (IR On) 10m
- Auto White Balance



Specifications

MODEL	DL-355CS	DL-325CS
Image Sensor	1/3" Sony CCD (PAL:ICX639BK/NTSC:ICX638BK)	1/3" Sony CCD (PAL:ICX633BK/NTSC:ICX632BK)
DSP System	CXD3172	CXD3142
TV System	PAL/NTSC	
Effective Pixels	PAL:795(H)x596(V) NTSC:811(H)x508(V)	PAL:537(H)x597(V) NTSC:537(H)x505(V)
Horizontal Resolution	540TVL	420TVL
Minimum Illumination	0.5 LUX/F1.2	
S/N Ratio	48db (AGC Off)	
Video Output	Composite 1.0Vp-p at 75Ohm	
White Balance	Auto (AWB)	
Electronic Shutter	Auto (1/50 ~ 1/120000 Sec.)	
Gamma Correction	0.45	
Sync. System	Internal	
Gain Control	Auto (AGC)	
IR LED	12 PSC	
IR View Distance	10m	
Lens	3.6mm Board Lens	
Power	DC12V/180mA	
Operation Temperature	-10°C ~ 50°C	
Dimension	110L x 72H mm	
Net Weight	330g	



HIDDEN SMOKE DETECTOR CAMERA

DS-425CS

DS-325CS

DS-355CS



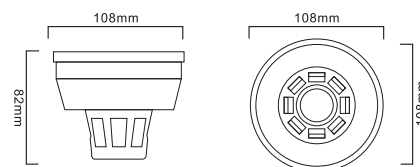
Features

- SONY CCD
- Smoke Detector style Camera
- CCD Hidden Camera
- Compact and Beautiful Design
- Auto White Balance
- For Offices, Hotels...



Specifications

MODEL	DS-355CS	DS-325CS	DS-425CS
Image Sensor	1/3" Sony CCD (PAL:ICX639BK NTSC:ICX638BK)	1/3" Sony CCD (PAL:ICX633BK NTSC:ICX632BK)	1/4" Sony CCD (PAL:ICX643BK NTSC:ICX642BK)
DSP System	CXD3172	CXD3142	
TV System	PAL/NTSC		
Effective Pixels	PAL:795(H)x596(V) NTSC:811(H)x508(V)	PAL:537(H)×597(V) NTSC:537(H)×505(V)	
Horizontal Resolution	540TVL	420TVL	
Minimum Illumination	0.02 LUX	0.05 LUX	0.5 LUX
S/N Ratio	48db (AGC Off)		
Video Output	Composite 1 0Vp-p at 75Ohm		
White Balance	Auto (AWB)		
Electronic Shutter	Auto (1/50 ~ 1/100000 Sec.)		
Gamma Correction	0.45		
Sync. System	Internal		
Gain Control	Auto (AGC)		
Lens	3.7mm Pinhole lens		
Power	DC12V/150mA		
Operation Temperature	-10℃ ~ 50℃		
Dimension	108W x 82H		
Net Weight	170g		



HIDDEN NETWORK SOCKET CAMERA

MN-322CS



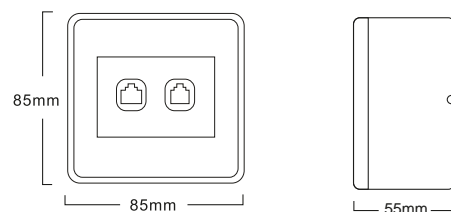
Features

- SONY CCD
- Network socket Hidden camera
- Built-in Pin-Hole Lens
- Compact size and beautiful design
- Auto White Balance
- Easy installation



Specifications

MODEL	MN-322CS
Image Sensor	1/3" Sony CCD (PAL:ICX633BK/NTSC:ICX632BAK)
DSP System	CXD3142
TV System	PAL/NTSC
Effective Pixels	PAL:537(H)×597(V) / NTSC:537(H)×505(V)
Horizontal Resolution	420TVL
Minimum Illumination	0.1 LUX/F1.2
S/N Ratio	48db (AGC Off)
Video Output	Composite 1.0Vp-p at 75ohm
White Balance	Auto (AWB)
Electronic Shutter	Auto (1/50 ~ 1/120000 Sec.)
Gamma Correction	0.45
Sync. System	Internal
Gain Control	Auto (AGC)
Lens	3.7mm Pin-Hole
Power	DC12V/180mA
Operation Temperature	-10°C ~ 50°C
Dimension	85L x 55W x 85H mm
Net Weight	150g



HIDDEN SPRINKLER CAMERA

MF-425CS



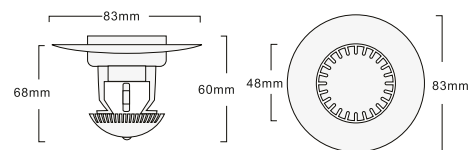
Features

- Water Sprinkler Design Camera
- Built-in Pin-Hole Lens
- Auto White Balance
- Easy installation
- SONY CCD Sensor
- Ideal for Monitoring Cashier



Specifications

MODEL	MF-425CS
Image Sensor	1/4" Sony CCD (PAL:ICX643BK/NTSC:ICX642BK)
DSP System	CXD3142
TV System	PAL/NTSC
Effective Pixels	PAL:500H x 582V / NTSC:510H x 492V
Horizontal Resolution	420TVL
Minimum Illumination	0.5 LUX/F1.2
S/N Ratio	48db (AGC Off)
Video Output	Composite 1.0Vp-p at 75ohm
White Balance	Auto (AWB)
Electronic Shutter	Auto (1/50 ~ 1/120000 Sec.)
Gamma Correction	0.45
Sync. System	Internal
Gain Control	Auto (AGC)
Lens	3.6mm Pin-Hole
Power	DC12V/180mA
Operation Temperature	-10°C ~ 50°C
Dimension	83L x 62W x 68H mm
Net Weight	70g



HIDDEN MIRROR CAMERA

DM-325CS



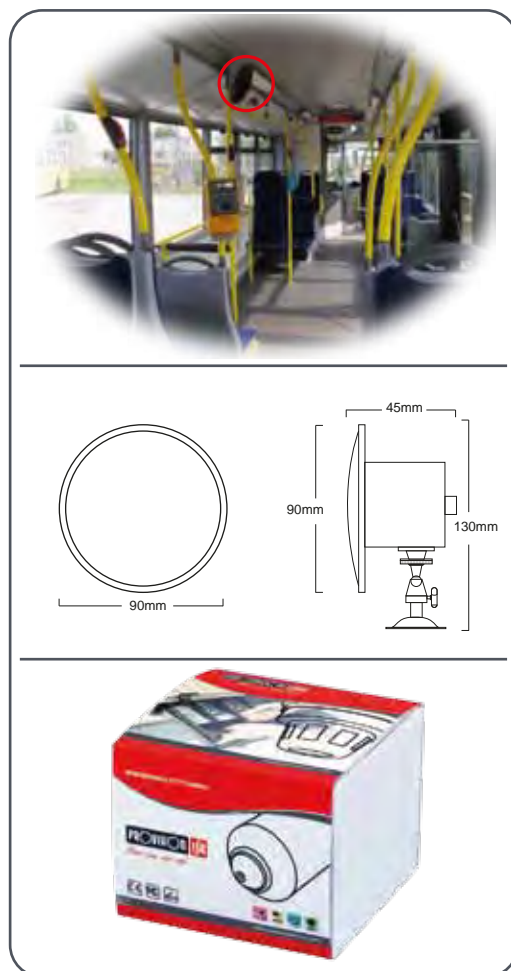
Features

- Mirror type outlook with camera embedded
- Adjustable view angle
- Front Cover Made from Unique design Glass Which Conceal the Camera



Specifications

MODEL	DM-325CS
Image Sensor	1/3" Sony CCD (PAL:ICX633BK/NTSC:ICX632BAK)
DSP System	CXD3142
TV System	PAL/NTSC
Effective Pixels	PAL:537(H)×597(V) / NTSC:537(H)×505(V)
Horizontal Resolution	420TVL
Minimum Illumination	0.5 LUX/F1.2
S/N Ratio	48db (AGC Off)
Video Output	Composite 1.0Vp-p at 75ohm
White Balance	Auto (AWB)
Electronic Shutter	Auto (1/50 ~ 1/120000 Sec.)
Gamma Correction	0.45
Sync. System	Internal
Gain Control	Auto (AGC)
Lens	3.6mm Board Lens
Power	DC12V/100mA
Operation Temperature	-10°C ~ 50°C
Dimension	90L x 45W x 130H mm
Net Weight	290g



LIGHT SERIES

420TVL

I1-322CP

Features

- 1/3" CCD
- 420 TVL
- 0.5 Lux (0 Lux IR On)
- With 12 Leds, 10 Mt
- 3.6mm Lens
- For Day & Night Conditions



I2-322CP

Features

- 1/3" CCD
- 420 TVL
- 0.5 Lux (0 Lux IR On)
- With 28 Leds, 20 Mt
- 4/6mm Lens
- For Day & Night Conditions



DX-322CP36

Features

- 1/3" CCD
- 420TVL, 0.1 Lux
- 3.6mm Lens
- Compact and Beautiful Design



DI-322CP36(PL)

Features

- 1/3" CCD
- 420 TVL
- 0.5 Lux (0 Lux IR On)
- With 24 Leds, 20 Mt
- 3.6mm Lens
- For Day & Night Conditions



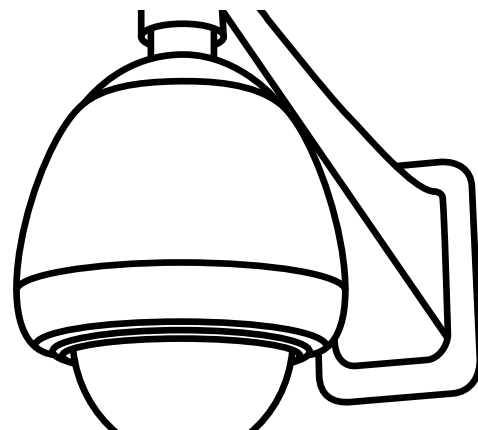
MV-322CP

Features

- Miniature Hidden Camera
- 1/3" CCD
- 420TVL, 0.1 Lux
- 3.7mm Pin-Hole Lens



PROFESSIONAL PTZ CAMERA Series



PTZ is an acronym for Pan, Tilt, and Zoom.

PTZ Cameras are actually a motorized camera, which allow us to control remotely the camera pointed direction on all 3 dimensions: • Pan (horizontal axis) • Tilt (Vertical axis) • Zoom (zoom in zoom out with auto focus).

Due to the PTZ camera performance and the relatively high cost they are mostly required in "professional" installations where there is the need for "live monitoring" like control rooms.



MINI PTZ ECONOMIC SERIES

We believe that with a cost effective product, anyone can enjoy a PTZ camera, that why we design a series of economic PTZ camera which has all the features of a professional PTZ but with only 3X zoom.



PROFESSIONAL PTZ SERIES

A series of professional PTZ cameras with different motor speed and zoom options design for professional use. For this kind of high sensitive applications the most important is high reliability, therefore we are using only original modules from Sony and Sanyo together with superior motor and housing to deliver the most accurate and reliable product.

MINI PTZ ECONOMIC SERIES

P⁶³ ANTI-VANDAL DOME

P⁶⁴ INFRA RED DOME

P⁶⁵ OUTDOOR PLASTIC

P⁶⁶ OUTDOOR METAL

PROFESSIONAL PTZ SERIES

P⁶⁷ SILVER SERIES

P⁶⁸ GOLD SERIES

P⁶⁹ PLATINUM SERIES

P⁷⁰ ACCESSORIES

MINI PTZ ANTI-VANDAL DOME

PA-355CSVF
PA-325CSVF



Features

- Economy PTZ for Small Installations
- Anti-Vandal Case
- Indoor Application
- Small PTZ camera up to 3X Zoom.
- Elegant and small case for Ceiling mount
- Perfect for small shops, restaurants, houses.
- Remote Control Optional for Control and Settings.

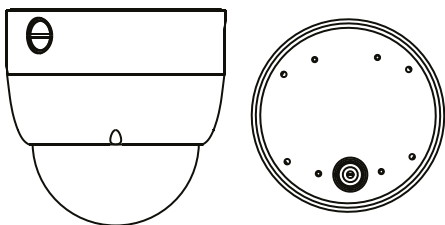


Camera Specification

MODEL	PA-355CSVF	PA-325CSVF
Image sensor	1/3" Sony CCD (PAL:ICX639BK/NTSC:ICX638BK)	1/3" Sony CCD (PAL:ICX633BK/NTSC:ICX632BK)
Horizontal Resolution	540TVL	420 TVL
Effective Pixels	PAL: 795(H)×596(V) NTSC:811(H)×508(V)	PAL: 500(H)×582(V) NTSC:510(H)×492(V)
Power supply voltage	12V DC, 80mA	12V DC, 80mA
TV system	PAL/NTSC	PAL/NTSC
White Balance	Auto (AWB)	Auto (AWB)
Synchronous System	Internal	Internal
Minimum Illumination	0.02Lux /F1.2	0.05Lux /F1.2
S/N Ratio	≥48db	≥48db
Electronic Shutter	Auto (1/50(1/60)-1/100000 Sec)	Auto (1/50(1/60)-1/100000 Sec)
Video signal	1.0vp-p750hms.	1.0vp-p750hms.
Lens configuration	4~9/8~20mm	4~9/8~20mm

Mechanical Specification

Dome Type:	4" Indoor 24IR PTZ dome	Preset points:	32 Points
Protocol:	Pelco-P/D	Pattern Tours:	Programable 16 preset point Programable preset number and dwell time / speed
Baudrate:	1200/2400/4800/9600 bps	Auto Scan:	Yes (Programable speed and left right limited point)
Address:	0-255	Power-off memory:	Current setting and state (Include Pattern, Not include auto scan)
Pan Rotation:	360°Continues rotation	Home position:	Yes (Programable auto come back home position)
Tilt Rotation:	0°~90°	Zoom:	Optical 3X
Max Pan Speed:	60°/Sec	Protection:	Indoor use
Max Tilt Speed:	30°/Sec	Operating:	-5°C ~ 60°C
Preset speed:	100°/Sec	Power:	12VDC 500mA
Preset accuracy:	±3°	Communication:	RS485 (+/-)



Remote Controller (Optional)



MINI PTZ INFRA RED DOME

PI-355CSVF

PI-325CSVF



Features

- Economy PTZ for Small Installations
- Indoor Application
- Small PTZ camera up to 3X Zoom.
- Elegant and small case, Ceiling mount
- IR Leds for night time, 20mt
- Perfect for small shops, restaurants, houses.
- Remote Control Optional for Control and Settings.

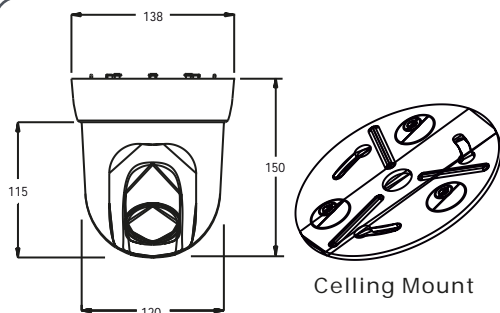


Camera Specification

MODEL	PI-355CSVF	PI-325CSVF
Image sensor	1/3" Sony CCD (PAL:ICX639BK/NTSC:ICX638BK)	1/3" Sony CCD (PAL:ICX633BK/NTSC:ICX632BK)
Horizontal Resolution	540TVL	420 TVL
Effective Pixels	PAL: 795(H)×596(V) NTSC:811(H)×508(V)	PAL: 500(H)×582(V) NTSC:510(H)×492(V)
Power supply voltage	12V DC, 80mA	12V DC, 80mA
TV system	PAL/NTSC	PAL/NTSC
White Balance	Auto (AWB)	Auto (AWB)
Synchronous System	Internal	Internal
Minimum Illumination	0.5Lux /F1.2 (0 Lux IR On)	0.5Lux /F1.2 (0 Lux IR On)
S/N Ratio	≥48db	≥48db
Electronic Shutter	Auto (1/50(1/60)-1/100000 Sec)	Auto (1/50(1/60)-1/100000 Sec)
Video signal	1.0vp-p750hms.	1.0vp-p750hms.
Lens configuration	4~9/8~20mm	4~9/8~20mm
LED number	24 PCS, 20mt	24 PCS, 20mt

Mechanical Specification

Dome Type:	5" Indoor 24IR PTZ dome	Preset points:	32 Points
Protocol:	Pelco-P/D	Pattern Tours:	Programable 16 preset point Programable preset number and dwell time / speed
Baudrate:	1200/2400/4800/9600 bps	Auto Scan:	Yes (Programable speed and left right limited point)
Address:	0-255	Power-off memory:	Current setting and state (Include Pattern, Not include auto scan)
Pan Rotation:	360°Continues rotation	Home position:	Yes (Programable auto come back home position)
Tilt Rotation:	0°~90°	Zoom:	Optical 3X
Max Pan Speed:	60°/Sec	Protection:	Indoor use
Max Tilt Speed:	30°/Sec	Operating:	0°C ~ 60°C
Preset speed:	60°/Sec	Power:	12VDC 500mA
Preset accuracy:	±3°		



Celling Mount



Remote Controller (Optional)



MINI PTZ OUTDOOR PLASTIC

PZ-355CSVF
PZ-325CSVF



Features

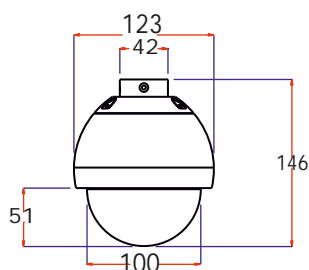
- Economy PTZ for Small Installations
- Indoor/Outdoor Application
- Small PTZ camera up to 3X Zoom.
- Elegant and Small Case for Ceiling/Wall Mount
- Perfect for Small Shops, Restaurants, Houses
- Remote Control Optional for Control and Settings.
- Waterproof

Camera Specification

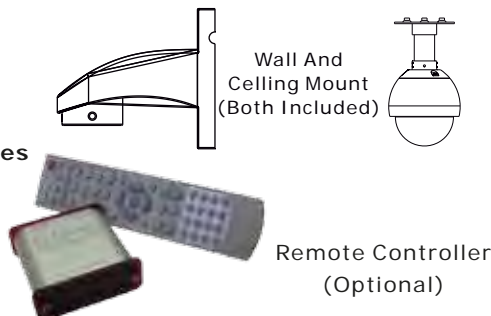
MODEL	PZ-355CSVF	PZ-325CSVF
Image sensor	1/3" Sony CCD (PAL:ICX639BK/NTSC:ICX638BK)	1/3" Sony CCD (PAL:ICX633BK/NTSC:ICX632BK)
Horizontal Resolution	540TVL	420 TVL
Effective Pixels	PAL: 795(H)×596(V) NTSC:811(H)×508(V)	PAL: 500(H)×582(V) NTSC:510(H)×492(V)
Power supply voltage	12V DC, 80mA	12V DC, 80mA
TV system	PAL/NTSC	PAL/NTSC
White Balance	Auto (AWB)	Auto (AWB)
Synchronous System	Internal	Internal
Minimum Illumination	0.02Lux /F1.2	0.05Lux /F1.2
S/N Ratio	≥48db	≥48db
Electronic Shutter	Auto (1/50(1/60)-1/100000 Sec)	Auto (1/50(1/60)-1/100000 Sec)
Video signal	1.0vp-p750hms.	1.0vp-p750hms.
Lens configuration	4~9/8~20mm	4~9/8~20mm

Mechanical Specification

Dome Type:	5" Indoor 24IR PTZ dome	Preset points:	32 Points
Protocol:	Pelco-P/D	Pattern Tours:	Programable 16 preset point Programable preset number and dwell time / speed
Baudrate:	1200/2400/4800/9600 bps	Auto Scan:	Yes (Programable speed and left right limited point)
Address:	0-255	Power-off memory:	Current setting and state (Include Pattern, Not include auto scan)
Pan Rotation:	360°Continues rotation	Home position:	Yes (Programable auto come back home position)
Tilt Rotation:	0°~90°	Zoom:	Optical 3X
Max Pan Speed:	60°/Sec	Protection:	Indoor use
Max Tilt Speed:	30°/Sec	Operating:	-5°C ~ 60°C
Preset speed:	100°/Sec	Power:	12VDC 500mA
Preset accuracy:	±3°		



Accessories



MINI PTZ OUTDOOR METAL

PZ-355CSVF(M)

PZ-325CSVF(M)

Features

- Economy PTZ for Small Installations
- Indoor/Outdoor Application
- Metal Case
- Small PTZ camera up to 3X Zoom.
- Elegant and Small Case for Ceiling/Wall Mount
- Perfect for Small Shops, Restaurants, Houses
- Remote Control Optional for Control and Settings.
- Waterproof

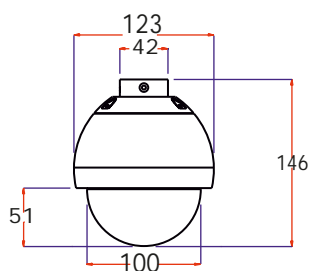


Camera Specification

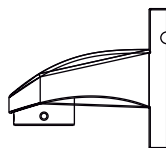
MODEL	PZ-355CSVF(M)	PZ-325CSVF(M)
Image sensor	1/3" Sony CCD (PAL:ICX639BK/NTSC:ICX638BK)	1/3" Sony CCD (PAL:ICX633BK/NTSC:ICX632BK)
Horizontal Resolution	540TVL	420 TVL
Effective Pixels	PAL: 795(H)×596(V) NTSC:811(H)×508(V)	PAL: 500(H)×582(V) NTSC:510(H)×492(V)
Power supply voltage	12V DC, 80mA	12V DC, 80mA
TV system	PAL/NTSC	PAL/NTSC
White Balance	Auto (AWB)	Auto (AWB)
Synchronous System	Internal	Internal
Minimum Illumination	0.02Lux /F1.2	0.05Lux /F1.2
S/N Ratio	≥48db	≥48db
Electronic Shutter	Auto (1/50(1/60)-1/100000 Sec)	Auto (1/50(1/60)-1/100000 Sec)
Video signal	1.0vp-p750hms.	1.0vp-p750hms.
Lens configuration	4-9/8-20mm	4-9/8-20mm

Mechanical Specification

Dome Type:	5" Indoor 24IR PTZ dome	Preset points:	32 Points
Protocol:	Pelco-P/D	Pattern Tours:	Programable 16 preset point Programable preset number and dwell time / speed
Baudrate:	1200/2400/4800/9600 bps	Auto Scan:	Yes (Programable speed and left right limited point)
Address:	0-255	Power-off memory:	Current setting and state (Include Pattern, Not include auto scan)
Pan Rotation:	360°Continues rotation	Home position:	Yes (Programable auto come back home position)
Tilt Rotation:	0°~90°	Zoom:	Optical 3X
Max Pan Speed:	60°/Sec	Protection:	Indoor use
Max Tilt Speed:	30°/Sec	Operating:	-5°C ~ 60°C
Preset speed:	100°/Sec	Power:	12VDC 500mA
Preset accuracy:	±3°		



Accessories



Wall And
Ceiling Mount
(Both Included)



Remote Controller
(Optional)



PROFFESIONAL PTZ SILVER SERIES

SILVER SERIES



Features

- Indoor/Outdoor Application
- Heavy-duty aluminum housing for Indoor/Outdoor application
- Support Pelco D/P Protocol.
- Pan range: 0-360° continuously, Tilt rang: 0-180° continuously, auto flip
- Panning speed: 0.05° to 90°/sec, Tilt speed: 0.05° to 60°/sec
- 64 preset, 4 Cruise tour, 1 Auto scan
- Built-in power-line surge protection and lighting protection

Camera Specification

MODEL	PZ-437CS18	PZ-432CS18	PZ-432CS26	PZ-432CS36	PZ-442CSA30	PZ-441CSA36
Camera module	SONY FCB-EX48C	SONY FCB-EX480C	SONY FCB-EX980S	SONY FCB-EX1010	SANYO VCC-MD600	SANYO VCC-MD800
Image sensor	1/4" Interline transfer CCD				1/4" SONY EXview HAD CCD	
Effective pixel	PAL: 752(H)x582(V) / NTSC: 768(H)x494(V)				PAL: 752(H)x582(V) / NTSC: 768(H)x494(V)	
Horizontal resolution	470TVL	470TVL/550TVL			520TVL	
Minimum illumination	0.7Lux	0.7Lux/0.05Lux	0.2Lux/0.05Lux	0.1Lux/0.01Lux	0.8Lux/0.04Lux	0.8Lux/0.0015Lux
S/N ratio	More than 50dB (AGC OFF)					
White balance	Automatic/manual					
Black light compensation	Automatic/manual					
Lens	f=4.1mm to 73.8mm F1.4 to F3.0		f=3.5mm to 91.0mm F1.6 to F3.8	f=3.4mm to 122.4mm F1.6 to F4.5	f=3.5mm to 105mm F1.4 to F3.7	f=3.6mm to 122.4mm F1.6 to F4.5
Zoom ratio	Optical x18, digital x12		Optical x26, digital x12	Optical x36, digital x12	Optical x30, digital x16	Optical x36, digital x16

Mechanical Specification

Address	0~255
Pan range	360° Continue
Tilt range	0°~90° Flip
Manual speed Pan	0.05~90°/Sec
Manual speed Tilt	0.05~60°/Sec
Preset speed	120°/Sec
Preset accuracy	±0.50°
Preset	64

General Info

Ingress Protection IP66	Yes
Operating Temperature	-40°~70°
Humidity	0%~90% (Non condensing)
Heater operate	(-5° on +5° off)
Power	24VAC±25%, 1.5A~2A, 60Hz/50Hz
Consumption	Heater off 12W heater on 37W
communication	RS485 (+/-)
Connection	BNC cable

Main Functions

Cruise Tours	4 Set With Fix Dwell Time
Auto Scan	1 Programmable (355° scan)
Integrate multi-protocol	Pelco D/P
Protocol automatically identify	Pelco D/P
Long-focus speed-limited	Yes
Broadcasting address	Yes
Intelligent power-off memory Current setting and state	Yes
Anti-surge and anti-Lightning Protection	Yes
Supporting camera	Automatically identify (Sony, Hitachi, Sanyo)

PROFFESIONAL PTZ GOLD SERIES

GOLD SERIES



Features

- Indoor/Outdoor Application
- Heavy-duty aluminum housing for Indoor/Outdoor application
- Support Pelco D/P Protocol.
- Pan range: 0-360°continuously, Tilt rang: 0-180°continuously, auto flip
- Panning speed: 0.05° to 120°/sec, Tilt speed: 0.05° to 90°/sec
- 128 preset, 8 Cruise tour, 1 Auto scan
- Built-in power-line surge protection and lighting protection

Camera Specification

MODEL	PZ-437CS18	PZ-432CS18	PZ-432CS26	PZ-432CS36	PZ-442CSA30	PZ-441CSA36
Camera module	SONY FCB-EX48C	SONY FCB-EX480C	SONY FCB-EX980S	SONY FCB-EX1010	SANYO VCC-MD600	SANYO VCC-MD800
Image sensor	1/4"Interline transfer CCD				1/4"SONY EXview HAD CCD	
Effective pixel	PAL: 752(H)x582(V) / NTSC:768(H)x494(V)				PAL: 752(H)x582(V) / NTSC:768(H)x494(V)	
Horizontal resolution	470TVL	470TVL/550TVL			520TVL	
Minimum illumination	0.7Lux	0.7Lux/0.05Lux	0.2Lux/0.05Lux	0.1Lux/0.01Lux	0.8Lux/0.04Lux	0.8Lux/0.0015Lux
S/N ratio	More than 50dB (AGC OFF)					
White balance	Automatic/manual					
Black light compensation	Automatic/manual					
Lens	f=4.1mm to 73.8mm F1.4 to F3.0		f=3.5mm to 91.0 mm F1.6 to F3.8	f=3.4mm to 122.4 mm F1.6 to F4.5	f=3.5mm to 105 mm F1.4 to F3.7	f=3.6mm to 122.4 mm F1.6 to F4.5
Zoom ratio	Optical x18, digital x12		Optical x26, digital x12	Optical x36, digital x12	Optical x30, digital x16	Optical x36, digital x16

Mechanical Specification

Address	0~255
Pan range	360°Continue
Tilt range	0°~90° Flip
Manual speed Pan	0.05~120°/Sec
Manual speed Tilt	0.05~90°/Sec
Preset speed	180°/Sec
Preset accuracy	±0.50°
Preset	128

General Info

Ingress Protection IP66	Yes
Operating Temperature	-40°~70°
Humidity	0%~90% (Non condensing)
Heater operate	(-5° on +5° off
Power	24VAC±25%,1.5A~ 2A ,60Hz/50Hz
Consumption	Heater off 12W heater on 37W
communication	RS485 (+/-)
Connection	BNC cable

Main Functions

Cruise Tours	8 Set With Fix Dwell Time
Auto Scan	1 Programmable (355° scan)
Integrate multi-protocol	Pelco D/P
Protocol automatically identify	Pelco D/P
Long-focus speed-limited	Yes
Broadcasting address	Yes
Intelligent power-off memory Current setting and state	Yes
Anti-surge and anti-Lightning Protection	Yes
Supporting camera	Automatically identify (Sony, Hitachi, Sanyo)

PROFFESIONAL PTZ PLATINUM SERIES

PLATINUM SERIES

Features

- Indoor/Outdoor Application
- Heavy-duty aluminum housing for Indoor/Outdoor application
- Support Pelco D/P Protocol.
- According to application, with parts for alarm, vandal-proof housing, sun-shield available
- Timer clock function, to start the movement in the time table have set
- Tilt rang: 0-180°continuously, auto flip
- Panning speed of max.250°/sec at preset mode and 0.05°/sec super fine control at manual mode
- 20 User-Definable characters
- Limit setting, to set the pan or tilt movement in a scope.
- 4 alarm inputs and 2 outputs terminals
- On-screen display, including temperature, angle, direction, zoom, etc.
- 256 preset, 8 Cruise tour, 4 pattern tour, 1 Auto scan, 8 Privacy masking, etc. Available
- Password protection. North direction setup
- Built-in power-line surge protection and lighting protection



Camera Specification

MODEL	PZ-437CS18	PZ-432CS18	PZ-432CS26	PZ-432CS36	PZ-442CSA30	PZ-441CSA36
Camera module	SONY FCB-EX48C	SONY FCB-EX480C	SONY FCB-EX980S	SONY FCB-EX1010	SANYO VCC-MD600	SANYO VCC-MD800
Image sensor	1/4"Interline transfer CCD				1/4"SONY EXview HAD CCD	
Effective pixel	PAL: 752(H)x582(V) / NTSC:768(H)x494(V)				PAL: 752(H)x582(V) / NTSC:768(H)x494(V)	
Horizontal resolution	470TVL	470TVL/550TVL			520TVL	
Minimum illumination	0.7Lux	0.7Lux/0.05Lux	0.2Lux/0.05Lux	0.1Lux/0.01Lux	0.8Lux/0.04Lux	0.8Lux/0.0015Lux
S/N ratio	More than 50dB (AGC OFF)					
White balance	Automatic/manual					
Black light compensation	Automatic/manual					
Lens	f=4.1mm to 73.8mm F1.4 to F3.0		f=3.5mm to 91.0 mm F1.6 to F3.8	f=3.4mm to 122.4 mm F1.6 to F4.5	f=3.5mm to 105 mm F1.4 to F3.7	f=3.6mm to 122.4 mm F1.6 to F4.5
Zoom ratio	Optical x18, digital x12		Optical x26, digital x12	Optical x36, digital x12	Optical x30, digital x16	Optical x36, digital x16

Mechanical Specification

Address	0~255
Pan range	360°Continue
Tilt range	0°~90° Flip
Manual speed Pan	0.05~240°/Sec
Manual speed Tilt	0.05~180°/Sec
Preset speed	240°/Sec
Preset accuracy	±0.50°
Preset	256

General Info

Ingress Protection IP66	Yes
Operating Temperature	-40°~70°
Humidity	0%~90% (Non condensing)
Heater operate	(-5)° on +5° off
Power	24VAC±25%,1.5A~ 2A ,60Hz/50Hz
Consumption	heater off 12W heater on 37W
communication	RS485 (+/-) or Manchester
Connection	BNC cable

Main Functions

Remote firmware updating and setup	to update firmware by RS485, to set ID by RS485	Total working time recording	to record total working time and time exceed limit
Cruise Tours	8 Programable(Dwell time speed preset point)	Home position	Yes
Speed setup for cruise tour	Yes	Password protection	Yes
Pattern Tours	4 Programable	Long-focus speed-limited	Yes
Auto Scan	1 Programable (355° scan)	Broadcasting address	Yes
Alarm	Optional, 4 inputs, 2 outputs	Intelligent power-off memory current setting and state	Yes
Temperature setup and display	Temperature alarm & display on screen	anti-surge and anti-lightning protection	Yes
Time adjustment	to adjust Time by broadcasting	OSD menu operation	Yes
Date/Time setup and display	Date/time display on screen and modify	Supporting camera	Automatical identify (Sony, Hitach, Sanyo)
Timer Programming	timer action	Camera menu operation	Yes
Integrate multi-protocol	Pelco_D/P, Pelco C (optional)	Camera character programming	20 character
Protocol Automatical Identify	Pelco_D/P	Privacy masking	Yes, maximum 8 zones.

PTZ ACCESORIES

Speed dome keyboard controller



- MODEL: C01
- Speed dome controller
 - Pelco D/P available
 - With 3-axis joystick



- MODEL: C03
- Speed dome controller
 - Pelco D/P available
 - With 3-axis joystick and Screen

Remote controller



- MODEL: PR-PTC
- PTZ Dome Controller

Parts and Brackets



- MODEL: A
- Black cover to hide camera



- MODEL: B01
- Pendant mount bracket
 - Short: 30cm
 - Middle: 50cm
 - Long: 100cm



- MODEL: B02
- Wall mount bracket



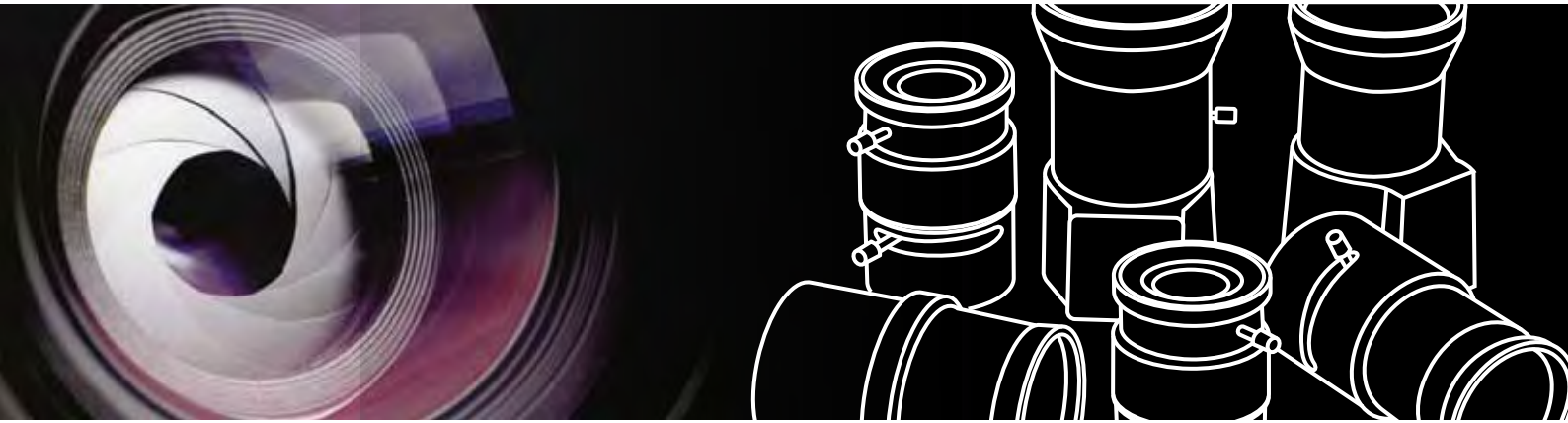
- MODEL: B03
- Corner mount bracket



- MODEL: B04
- Pole mount bracket



- MODEL: B05
- Big wall mount bracket
 - Small: 65*90*52cm
 - Big: 96*107*84cm



Lenses

are a critical factor in the image quality final result. The lens performance will dramatically affect the image quality. Furthermore the lens will determine the angle of view or in other words- "what will I see?"

Lens Characterized by the lens size (focal) which is mark by mm'- The smaller the size (focal Number) the wider the angel the lens will produce. For example a 3.6mm will provide a wider angle of view (90) while 16mm lens will provide 20 deggre angel of view; however a "larger" lens will give you the ability to view farer details. There are different types of lenses-

- Mono Focal- fix focal lenses which allows you to control the focus only.
- Vari Focal- allows you to change the zoom of the lens and the focus.
- Manual Iris- allows you to manually adjust the Lens Iris size and control the amount of light passing thru to the CCD.
- Auto Iris- automatically determines the Iris size (diameter) according to the light conditions.

Provision-ISR lenses Design Capturing the most accurate image and delivering the best result with Provision-ISR cameras.



STANDARD LENS

Our standard lens series is outstanding cost effective solution for the daily installation providing a clear and sharp image.

ULTRASIGHT LENS

Provision-ISR brings to you the new "UltraSight" lens series. "UltraSight" vari-focal lenses implemented the latest knowledge in optics and made by "state of the art" machinery in order to deliver the most accurate and real image.



02812DV



Focal Length		2.8 ~ 12mm	Mount/Flange Back	CS/M25.4X0.79
Max. Aperture Rate		1:1.4	Iris Control	Direct Drive
Image Format Cover		1/3"	Back Focal Length	-
Angle of View	D	93.95° ~ 28.07°	Temperature	-40°C ~ +50°C
	H	87.66° ~ 22.62°	Dimension(W)	45.6×47×71.6mm
	V	65.47° ~ 17.06°	Weight	116g
Supply Voltage		DC6 ~ 12V		

0358DV



Focal Length		3.5 ~ 8mm	Mount/Flange Back	CS/M25.4X0.79
Max. Aperture Rate		1:1.4	Iris Control	Direct Drive
Image Format Cover		1/3"	Back Focal Length	8.2 ~ 12.9mm
Angle of View	D	81.20° ~ 41.10°	Temperature	-40°C ~ +50°C
	H	68.88° ~ 33.40°	Dimension(W)	34.5×43×45.7mm
	V	54.43° ~ 25.36°	Weight	60g
Supply Voltage		DC6 ~ 12V		

0615DV



Focal Length		6 ~ 15mm	Mount/Flange Back	CS/M25.4X0.79
Max. Aperture Rate		1:1.4	Iris Control	Direct Drive
Image Format Cover		1/3"	Back Focal Length	12.2 ~ 19.5mm
Angle of View	D	53.13° ~ 22.62°	Temperature	-40°C ~ +50°C
	H	43.60° ~ 18.18°	Dimension(W)	38×43.6×61mm
	V	33.40° ~ 13.69°	Weight	89g
Supply Voltage		DC6 ~ 12V		

0550DV



Focal Length		5 ~ 50mm	Mount/Flange Back	CS/M25.4X0.79
Max. Aperture Rate		1:1.4	Iris Control	Direct Drive
Image Format Cover		1/3"	Back Focal Length	10 ~ 12.5mm
Angle of View	D	61.93° ~ 6.87°	Temperature	-40°C ~ +50°C
	H	51.28° ~ 5.49°	Dimension(W)	41×47×75.9mm
	V	39.6° ~ 4.12°	Weight	165g
Supply Voltage		DC6 ~ 12V		

05100DV



Focal Length		5 ~ 100mm	Mount/Flange Back	CS/M25.4X0.79
Max. Aperture Rate		1:1.8	Iris Control	Direct Drive
Image Format Cover		1/3"	Back Focal Length	6.6 ~ 8.3mm
Angle of View	D	61.93° ~ 3.44°	Temperature	-40°C ~ +50°C
	H	51.28° ~ 2.75°	Dimension(W)	84.5×48×48.5mm
	V	39.6° ~ 2.06°	Weight	203.5g
Supply Voltage		DC6 ~ 12V		



02812V



Focal Length	2.8 ~ 12mm	Mount/Flange Back	CS/M25.4X0.79
Max. Aperture Rate	1:1.4	Iris Control	Manual
Image Format Cover	1/3"	Back Focal Length	-
Angle of View	D	Temperature	-40°C ~ +50°C
	H	Dimension(W	35×35×61.6mm
	V	Weight	129g
Supply Voltage	DC6 ~ 12V		

0358V



Focal Length	3.5 ~ 8mm	Mount/Flange Back	CS/M25.4X0.79
Max. Aperture Rate	1:1.4	Iris Control	Manual
Image Format Cover	1/3"	Back Focal Length	8.2 ~ 12.9mm
Angle of View	D	Temperature	-40°C ~ +50°C
	H	Dimension(W	35×35×46.3mm
	V	Weight	66g
Supply Voltage	DC6 ~ 12V		

0615V



Focal Length	6 ~ 15mm	Mount/Flange Back	CS/M25.4X0.79
Max. Aperture Rate	1:1.4	Iris Control	Manual
Image Format Cover	1/3"	Back Focal Length	-
Angle of View	D	Temperature	-40°C ~ +50°C
	H	Dimension(W	33.8×33.8×60.5mm
	V	Weight	125g
Supply Voltage	DC6 ~ 12V		

Fixed Iris Lens

0216F



Focal Length (mm)	2.1	Image Format (Inch)	1/3"
Angle of View (HOR)	170	M.O.D. (m)	0.2
Aperture (F)	1.6	Dimensions (HxL)mm	30 x 20.7
Mount	CS	Weight (g)	55

02516F



Focal Length (mm)	2.5	Image Format (Inch)	1/3"
Angle of View (HOR)	110	M.O.D. (m)	0.2
Aperture (F)	1.6	Dimensions (HxL)mm	30 x 21.8
Mount	CS	Weight (g)	55

CCTV LENSES

Fixed Iris Lens



02816F				
	Focal Length (mm)	2.8	Image Format (Inch)	1/3"
	Angle of View (HOR)	122	M.O.D. (m)	0.15
	Aperture (F)	1.6	Dimensions (HxL)mm	30 x 12
	Mount	CS	Weight (g)	55
0416F				
	Focal Length (mm)	4	Image Format (Inch)	1/3"
	Angle of View (HOR)	70.6	M.O.D. (m)	0.1
	Aperture (F)	1.6	Dimensions (HxL)mm	30 x 19.4
	Mount	CS	Weight (g)	55
0620F				
	Focal Length (mm)	6	Image Format (Inch)	1/3"
	Angle of View (HOR)	48.1	M.O.D. (m)	0.1
	Aperture (F)	2.0	Dimensions (HxL)mm	30 x 23.5
	Mount	CS	Weight (g)	55
0820F				
	Focal Length (mm)	8	Image Format (Inch)	1/3"
	Angle of View (HOR)	33.4	M.O.D. (m)	0.1
	Aperture (F)	2.0	Dimensions (HxL)mm	30 x 27.2
	Mount	CS	Weight (g)	60
1216F				
	Focal Length (mm)	12	Image Format (Inch)	1/3"
	Angle of View (HOR)	28	M.O.D. (m)	0.1
	Aperture (F)	1.6	Dimensions (HxL)mm	30 x 13.1
	Mount	CS	Weight (g)	26
1616F				
	Focal Length (mm)	16	Image Format (Inch)	1/3"
	Angle of View (HOR)	18	M.O.D. (m)	0.1
	Aperture (F)	1.6	Dimensions (HxL)mm	30 x 14.5
	Mount	CS	Weight (g)	29
2514F				
	Focal Length (mm)	25	Image Format (Inch)	1/2"
	Angle of View (HOR)	20	M.O.D. (m)	0.3
	Aperture (F)	1.4	Dimensions (HxL)mm	30 x 32
	Mount	C	Weight (g)	70

UltraSight lenses

For Ultra accurate image

This state of the art lenses series designed to support the latest high resolution cameras and to deliver the most precise image.



UltraSight lenses Main Features:

- No black corner
 - No blurred perimeter
 - Adaptation of rotational mount
 - Sharp image
 - Lock function
-

Standard CCTV lenses which were designed few years back were designed to answer the CCTV cameras demand at that time with most cameras providing an average resolution of 400 TVL. These days, when latest technology CCTV cameras are designed to deliver resolution of over 600 TVL, standard CCTV lenses will not be able to "catch" high resolution images and will cause decreasing of the image resolution.

The final result will be a lower resolution image then what we could have achieved.

The hard part of producing a high resolution lens is to design and manufacturing a lens which can keep on high resolution and homogeneous accuracy level not only in the center of the image but in the entire image area.

Standard lenses might provide decent image quality in the center of the image, but not on the sides.

Conventional lens



UltraSight lens



• Black Corner

Black Corner is one of the common phenomenon in standard quality lenses, especially in "wide angle" position. "UltraSight" lenses have a very professional optics design to prevent this problem.

Conventional lens



UltraSight lens



• Blurred Perimeter

Blurred Perimeter is one of the most important imaging quality indexes. It refers to the phenomenon that the image is clear in the center but the surrounding is blurry. "UltraSight" lenses have perfectly resolved the blurred Perimeter to ensure right definition of the image.

Conventional lens



UltraSight lens



• No Field Curvature

The phenomenon of "Field Curvature" is widely present in cheap lenses. Near objects in the image seems to have an inward curve, and far objects seems to have outward curve. PROVISION-ISR lenses with advanced optical system have eliminated this problem to deliver excellent image.



• Locked Feature

PROVISION-ISR lenses are designed with the special locked system on the operative part of the focus and zoom. This locked system is to prevent out of focus and other similar problems.

CCTV LENSES

"UltraSight" Vari-Focal Lens Series



US2812AI



Focal Length	2.8 ~ 12mm		Effective Lens Aperture	Front Rear	Ø26.6mm Ø7.7mm
Max. Aperture Rate	1:1.4 ~ 360		Back Focal Length	7.7 ~ 17.9mm	
Max. Image Format	4.8 x 3.6		Flange Back Length	12.5mm	
Operation	Iris	Auto (F1.4 ~ 360)	Mount	CS (1"-32 UNF)	
	Focus	Manual	Dimension(LxWxH)	53.9x45x49.4mm	
	Zoom	Manual	Weight	76g	
Object Size At 25cm (HxV)	2.8mm	1/3" 89.6x36.8cm	1/4" 67.2x27.6cm		
	12mm	10.6x8.0cm	8.0x6.0cm		
Coating	Multi & Single		Temperature	-10°C ~ +50°C	
Angle of View	D	1/3"	1/4"	91.3° ~ 22.5°	
	H			73.2° ~ 18.1°	
	V			54.4° ~ 13.5°	
Iris Coil	Drive	190Ω	Operation Voltage	Open	4.0V
	Control	700Ω		Close	0.5V

US0358AI



Focal Length		3.5 ~ 8mm		Effective Lens Aperture	Front Rear	Ø14.2mm Ø11mm
Max. Aperture Rate		1:1.0 ~ 360		Back Focal Length		8.7 ~ 14.7mm
Max. Image Format		4.8 x 3.6		Flange Back Length		12.5mm
Operation	Iris	Auto (F1.0 ~360)		Mount		CS (1"-32 UNF)
	Focus	Manual		Dimension(LxWxH)		46x38.6x45.3mm
	Zoom	Manual		Weight		54g
Object Size At 50cm (HxV)	3.5mm	1/3" 87.2x58.2cm		1/4" 58.2x40.9cm		
	8mm	32.1x23.6cm		23.6x17.5cm		
Temperature		-10°C ~ +50°C				
Angle of View	D	1/3"	111.2° ~ 44.7°	1/4"	77.4° ~ 33.3°	
	H		83.5° ~ 35.6°		60.4° ~ 26.6°	
	V		60.4° ~ 26.6°		44.5° ~ 19.9°	
Iris Coil	Drive	190Ω		Operation Voltage	Open	4.0V
	Control	850Ω			Close	0.5V

US0416AI



Focal Length		4.0 ~ 16mm		Effective Lens Aperture	Front Rear	Ø22mm Ø8mm
Max. Aperture Rate		1:1.4 ~ 360		Back Focal Length	7.0 ~ 16.2mm	
Max. Image Format		4.8 x 3.6		Flange Back Length	12.5mm	
Operation	Iris	Auto (F1.4 ~360)		Mount	CS (1"-32 UNF)	
	Focus	Manual		Dimension(LxWxH)	57.3×40×46mm	
	Zoom	Manual		Weight	61g	
Object Size At 50cm (HxV)	5mm	1/3" 64.1x46.2cm		1/4" 46.2x33.7cm		
	50mm	15.6x11.7cm		11.7x8.7cm		
Temperature		-10°C ~ +50°C				
Angle of View	D	1/3"	79.3° ~ 22.2°	1/4"	61.5° ~ 16.7°	
	H		65.4° ~ 17.8°		49.6° ~ 13.3°	
	V		49.6° ~ 13.3°		37.3° ~ 10.0°	
Iris Coil	Drive	190Ω		Operation Voltage	Open	4.0V
	Control	700Ω			Close	0.5V

US0550AI



Focal Length		5.0 ~ 50mm		Effective Lens Aperture	Front Rear	Ø37.7mm Ø10mm
Max. Aperture Rate		1:1.4 ~ 360		Back Focal Length		7.6 ~ 11.5mm
Max. Image Format		4.8 x 3.6		Flange Back Length		12.5mm
Operation	Iris	Auto (F1.4 ~360)		Mount		CS (1"-32 UNF)
	Focus	Manual		Dimension(LxWxH)		66.2×44×52mm
	Zoom	Manual		Weight		126g
Object Size At 50cm (HxV)	5mm	1/3" 49.5x36cm		1/4" 36.0x26.6cm		
	50mm	5.0x3.8cm		3.8x2.8cm		
Temperature		-10°C ~ +50°C				
Angle of View	D	1/3"	65.7° ~ 7.2°	1/4"	49.5° ~ 5.4°	
	H		52.7° ~ 5.7°		39.6° ~ 4.3°	
	V		39.6° ~ 4.3°		29.8° ~ 3.2°	
Iris Coil	Drive	190Ω		Operation Voltage	Open	4.0V
	Control	700Ω			Close	0.5V

STANDALONE DVR Series



DVR systems are the "heart" of any CCTV installation! Eventually all the information from all cameras accumulates in the DVR. The DVR is the Device to capture the Analog Video signal coming from the camera, convert it and save it into Digital format. Therefore the DVR is not less important from the cameras itself for the final resulting image quality. Moreover since all the recording data is being saved and rewriting over and over again on the DVR it must be a very reliable and high standard product.

All of Provision-ISR DVR's are designed and manufactured according to the knowledge accumulated during many years of experience. All of them adopt the latest H.264 video compression format to deliver the Maximum video quality in the Minimum storage volume.

Provision-ISR DVR's are made from the highest quality components and adapted to work in different conditions and applications. All of our DVR's stand out for its "full feature" operating system with user friendly graphical interface running from its powerful processor.

DVR includes VGA out, Video out, Spot out, Audio In/Out, RS-485 for PTZ control and Alarm In/Alarm out socket, it is also supported by a powerful network function for remote monitoring, full remote configuration and Mobile phone remote monitoring.

CIF DVR's



Our CIF DVR's serie are your first choice for all type if installations. it is an outstanding cost-effective products with excellent performance. It is a perfect solution to meet different clients requirements.

CIF Serie including 4,8 and 16CH DVR with 4 Ch audio and full Channel Playback.

D1 DVR's



Our latest Full D1 Real-Time DVR's Series is your best choice when " high resolution" surveillance is needed.

Full D1 recording provides you 4 time higher resolution compare with standard "CIF" DVR. It means that you can get 4 time pixels per object for detailed video and better recognition of the captured objects.

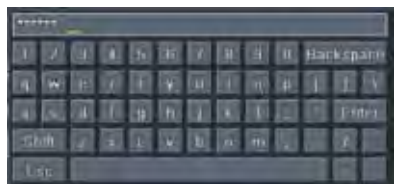
Our Full D1 Series including 4,8 and 16CH DVR, for all types of installation as retail, residential, offices, hotels and more...

P 81-84 CIF DVR's

P 85-88 D1 DVR'S

DVR MAIN FEATURES

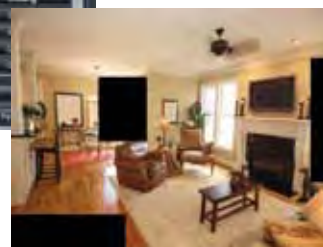
Main Screen



- Clear and sharp image
- Easy and graphical operation
- Fast login for records
- Full Virtual keyboard
- PTZ control- presets, cruise, track and auto scan
- Audio control
- Virtual PTZ
- Two Way Audio

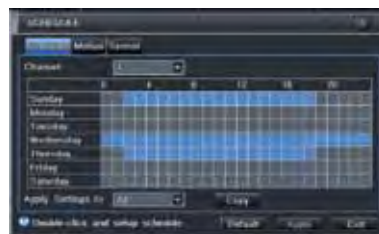


Basic & Live Settings



- VGA resolution up to 1280X1024.
- Device name and ID editable.
- Language setting
- DST
- Channel name editable.
- Channel security by hiding live video/ name.
- Color adjustments
- Spot out dwell time adjustable
- Masking- 3 areas per channel.

RECORD



- CIF Resolution (D1 for lower fps)
- Video quality different from remote.
- Selectable Frame rate for each channel.
- Audio recording (4 audio available).
- DATE / TIME position on the screen
- Easy and graphical schedule setting by mouse
- Picture Snap Function

DVR MAIN FEATURES

ALARM & MOTION



- Multi zone Motion Detect
- Motion Sensitivity
- Pre/Post record
- Up to 16 Alarms In and 4 Alarm Out
- Video loss alarm
- Full HDD alarm
- Motion To record, Alarm, PTZ, buzzer, full screen
- E-mail Notification with Picture Snap

PLAYBACK & BACKUP



- Smart search (time, events, files)
- Full channel real time playback
- Support deleting and locking recorded files
- Dragging bar for quick playback
- Back up in AVI format
- Express backup to USB/DVDRW with DVR player automatically packed
- Image Color Modification
- Digital Zoom

Mobile Phones



- Support mobile view by - Pocket PC Phone, Windows Mobile, Symbian, iPhone, Google phone, Blackberry.
- Support Live View and PTZ Control.
- Support 4ch view.
- Support multi site.
- Support Audio

DVR MAIN FEATURES

NETWORK



Remote Live



Remote DVD Menu Configuration



Remote Playback



Remote Backup

- Support Static IP, DHCP, PPOE, DDNS
- Support XP / VISTA / Win7.
- Fast connectivity.
- Dual Stream
- Remote Live view and Audio.
- Date & Time line table for playback.
- Full Channel playback
- Support Snap Shots.
- Color adjustment.
- Full remote setup
- Two Way Audio
- Remote Upgrade

CMS



CMS Interface

- Free CMS Software- Client management program which main function is to centralize all devices together and realize management of parameters and authorization.
- Support 64 channels in one screen, and up to 100 different locations and Up to 1024 cameras.
- CMS support 3 main function:
 - View the live site
 - **Device configuration**
 - Video search, playback and backup.

CIF DVR's 4/8CH Real-Time

SA-4100N

SA-8200N

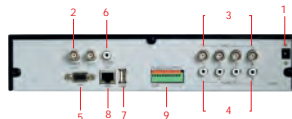


■Front Panel



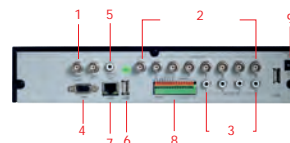
- 1.Indicator Power Led
- 2.Function key
- 3.Direction/Multi screen key
- 4.Power Button
- 5.IR receiver
- 6.USB 2.0

■SA-4100N Rear Panel



- 1.Power Socket
- 2.Video Out(BNCx2)
- 3.Video In(BNCx4)
- 4.Audio In(RCAx4)
- 5.VGA Out
- 6.Audio Out(RCAx1)
- 7.USB Mouse
- 8.LAN
- 9.Alarm In/Out RS485

■SA-8200N Rear Panel



- 1.Video Out(BNCx2)
- 2.Video In(BNCx8)
- 3.Audio In(RCAx4)
- 4.VGA Out
- 5.Audio Out(RCAx1)
- 6.USB Mouse
- 7.LAN
- 8.Alarm In/Out RS485
- 9.Power Socket



Specifications

MODEL	SA-4100N	SA-8200N
Video Compression	Standard H.264 Baseline	
Video In	Composite: BNCx4	Composite: BNCx8
Video Out	Composite: BNCx2, VGAx1	
Display Resolution	CVBS: 720x576(PAL),720x480(NTSC) VGA: 1280x1024	
Recording Resolution	352x288(CIF),704x576(D1) (PAL);352x240(CIF),704x480(D1) (NTSC)	
Display Frame Rate	100FPS(PAL),120FPS(NTSC)	200FPS(PAL),240FPS(NTSC)
Recording Frame Rate	100FPS-CIF, 25FPS-D1(PAL) 120FPS-CIF, 30FPS-D1(NTSC)	200FPS-CIF, 50FPS-D1(PAL) 240FPS-CIF, 60FPS-D1(NTSC)
Audio In	RCAx4	
Audio Out	RCAx1	
Alarm In	NO or NC 4CH	NO or NC 8CH
Alarm Out	Relay out 1CH	
Recording Mode	Manual, timer, motion detection, sensor	
Triplex/Pentaplex	Pentaplex	
Network Interface	RJ45 10/100M Self-adaptive	
Remote access	IE browser, CMS	
Communication Interface	RS485 x 2 (For PTZ and keyboard), USB 2.0 x 2	
HDD	SATA x1 - 2T	
Playback	Multi Channel	
Dual-stream	Individual Network video stream and local recording stream, set separately	
Backup media	Network, USB drive	
Control interface	Mouse, Front panel, Remote control, keyboard	
Dimension	W300 x D260 x H55mm	
Power Supply	12V	



CIF DVR's

16CH Real-Time

SA-16400NE

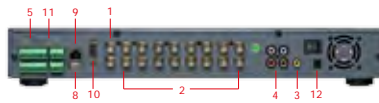


■ Front Panel



- 1.Number /CH key
- 2.Function key
- 3.Indicator Leds
- 4.Direction/Multi screen key
- 5.IR receiver
- 6.USB

■ Rear Panel



- 1.Video Out(BNCx2)
- 2.Video In(BNCx16)
- 3.Audio Out(RCAx1)
- 4.Audio In(RCAx4)
- 5.RS485
- 6.S-video
- 7.PS/2
- 8.USB Mouse
- 9.LAN
- 10.VGA Out
- 11.Alarm In/Out
- 12.Power Socket



Specifications

MODEL	SA-16400NE
Video Compression	Standard H.264 Baseline
Video In	Composite: BNCx16
Video Out	Composite: BNCx2, VGAx1
Display Resolution	CVBS: 720x576(PAL),720x480(NTSC) VGA: 1280x1024
Recording Resolution	352x288(CIF),704x576(D1) (PAL);352x240(CIF),704x480(D1) (NTSC)
Display Frame Rate	400FPS(PAL),480FPS(NTSC)
Recording Frame Rate	400FPS-CIF, 100FPS-D1(PAL) 480FPS-CIF, 120FPS-D1(NTSC)
Audio In	RCAx4
Audio Out	RCAx1
Alarm In	NO or NC 16CH
Alarm Out	Relay out 1CH
Recording Mode	Manual, timer, motion detection, sensor
Triplex/Pentaplex	Pentaplex
Network Interface	RJ45 10/100M Self-adaptive
Remote acces	IE browser, CMS
Communication Interface	RS485 x 2 (For PTZ and keyboard), USB 2.0 x 2
HDD	SATA x2 - 2T
Playback	Multi Channel
Dual-stream	Individual Network video stream and local recording stream, set separately
Backup media	Network, USB drive, DVD-RW
Control interface	Mouse, Front panel, Remote control, keyboard
Dimension	W430 x D380 x H55mm
Power Supply	12V



CIF DVR's 32CH Real-Time

SA-32800



Specifications

MODEL		SA-32800
System	Compression	Standard H.264
	CPU	ARM11 Duo
	OS	Embedded Linux
Video	Input	BNC X32
	Output	BNCX2: Main monitor, Spot monitor
		VGAX1: 1280x1024
		HDMI: 1080P(1920x1080) (Optional)
		Loopout: No
Audio	Input	Full Audio RCA X32
	Output	RCA X1
	2way audio	Yes
Record	Frame Rate	800FPS (PAL) / 960FPS (NTSC)
	Resolution	D1/CIF, 704x576/352x288 (PAL), 704x480/352x240 (NTSC)
	Bitrate	128k~2Mbps
	Encode	VBR/CBR
	Quality	5 Level
	Mode	Manual, continuous, motion, sensor
	File	Lock, unlock, reserving time, redundancy
Play back	Playback	1/4/8CH
	Search	Time, motion, sensor, single or multi-channel
	Function	Play, pause, FF, FB, Jog, Digital zoom
Alarm	Mode	Sensor, motion, video loss, network status, HDD status
	Input	16CH
	Output	4CH
	Triggering	Record, PTZ move, relay out, E-mail
Network	Interface	RJ45 Giga ethernet
	Protocol	TCP/IP, UDP, DHCP, DNS, PPPOE, DDNS, E-mail
	Function	Full Function
	Others	10 users online, dual stream
Cell phone	OS	Iphone, Blackberry, Andriod, Windows mobile, Symbian
	Function	Multi-channel display, server list, record, playback, PTZ, log
I/O	HDD	SATAx8, eSATAx2, 2T per HDD, support DVD-RW
	RS485 / USB	RS485X2 / USB2.0X2
	IR controller	1
Others	Power supply	AC: 110V/220V
	Dimention	430X450X89mm (WxDxH)
	Work Environment	0°C ~ 50°C, 10% ~ 90% Humidity

CIF DVR's 4CH Surveillance Kit



4 Ch Home/Office small surveillance system for self installation

The perfect answer for keeping your family secure, protecting your assets against theft, or managing your staff and resources more effectively. This easy to install complete security kit has everything you need to setup a secure home or business. Surveillance can be handled remotely worldwide.

Kit Content

- 4 Channel H.264 DVR Standalone
- 4 x IR Outdoor/Indoor camera
- 4 x Camera Brackets
- 2 x 10 / 2 x 20 meter cable
- 1 x DVR power supply
- 1 x Camera power supply 2.5Am
- USB mouse
- Remote control



D1 DVR

Professional Real Time

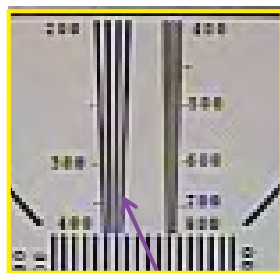
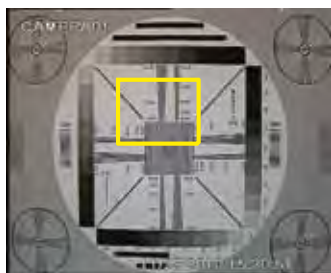
Full Channel D1 real time recording,
X4 times higher resolution than CIF.
For more detail video solution.



• High resolution

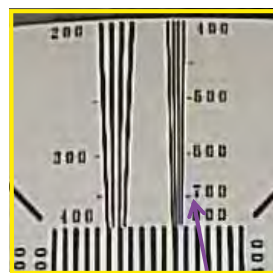
Ultimately the DVR will determine the resulting Video resolution. The DVR will capture the analog video signal received from the camera into compressed digital video, the resulting video resolution is depends on the capturing resolution. Using over 600TVL camera and then record the video at CIF resolution will be equalize to "driving a racing car in a crowded city". You won't be able to get 600 pixels of Horizontal resolution since the DVR is capturing only 352 pixels of horizontal resolution. In order to enjoy the high-resolution video coming from the cameras you need to have a DVR which can support the camera resolution. Provision-ISR full D1 DVR series, is the latest technology DVR with "full Channel real-time recording" and many advanced features.

UltraVision camera under CIF DVR

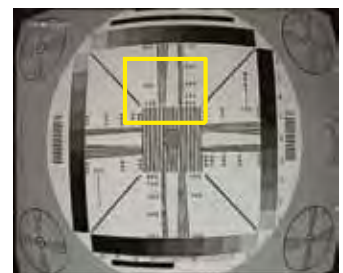


Less than 400 TVL

UltraVision camera under D1 DVR



700 TVL



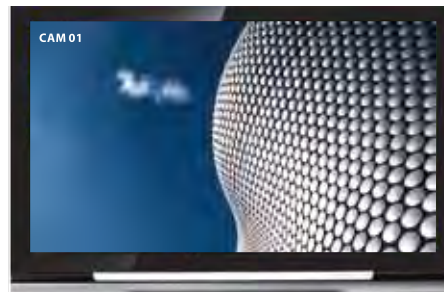
D1:720X480



VGA:1280X1024



HDMI 1080P: 1920x1080



• HDMI - full HD

Our latest full D1 DVR serves including a HDMI-full HD interface, so you can display a full HD video on your LCD screen.

• Product introduction

Our D1 DVR serves includes both 1U and 2U cases option to "catch" both standard installation and "High End" installation.

HD-1U series: Economic Full D1



- 4/8/16 channel
- 4 channel audio
- 2 SATA
- Full HD -HDMI (2nd Q)

HD-2U series: Profession Full D1



- 16 channel
- 16 channel audio
- 4 SATA
- Full HD -HDMI (2nd Q)
- Loop function (2nd Q)

D1 DVR's 4/8CH Real-Time

SA-4100HD (1U)

SA-8200HD (1U)



■ Front Panel



1. Number /CH key
2. Function key
3. Indicator Leds
4. Direction/Multi screen key
5. IR receiver
6. USB

■ SA-4100HD (1U) Rear Panel



1. RS485\Alarm In / Out
2. HDMI
3. LAN
4. VGA Out
5. Video Out(BNCx2)

■ SA-8200HD (1U) Rear Panel



6. Video In
7. USB
8. Audio In(RCAx4)
9. Audio Out(RCAx1)
10. DC12V Socket



Specifications

MODEL		SA-4100HD (1U)	SA-8200HD (1U)
System	Compression	Standard H.264	
	CPU	ARM11 Duo	
	OS	Embedded Linux	
Video	Input	BNC X4	BNC X8
	Output	BNCX2: Main monitor, Spot monitor / VGAX1: 1280x1024	
		VGAX1: 1280x1024	
Audio	Input	RCA X4	
	Output	RCA X1	
	2way audio	Yes	
Record	Frame Rate	PAL120fps D1/NTSC100fps D1	PAL 240fps D1/NTSC 200fps D1
	Resolution	D1/CIF, 704x576/352x288 (PAL), 704x480/352x240 (NTSC)	
	Bitrate	128k~2Mbps	
	Encode	VBR/CBR	
	Quality	5 Level	
	Mode	Manual, continuous, motion, sensor	
Play back	File	Lock, unlock, reserving time, redundancy	
	Playback	4CH	
	Search	Time, motion, sensor, single or multi-channel	
Alarm	Function	Play, pause, FF, FB, Jog; Digital zoom	
	Mode	Sensor, motion, video loss, network status, HDD status	
	Input	4CH	
Network	Output	4CH	
	Triggering	Record, PTZ move, relay out, E-mail	
	Interface	RJ45 Giga ethernet	
Cell phone	Protocol	TCP/IP, UDP, DHCP, DNS, PPPOE, DDNS, E-mail	
	Function	Full Function	
	Others	10 users online, dual stream	
I/O	OS	Iphone, Blackberry, Andriod, Windows mobile, Symbian	
	Function	Multi-channel display, server list, record, playback, PTZ, log	
	HDD	SATAx2, 2T per HDD, Support DVD-RW	
Others	RS485 / USB	RS485X2 / USB2.0X2	
	IR controller	1	
	Power supply	AC: 110V/220V	
Work Environment	Dimention	430X400X57mm (WxDxH)	
	Work Environment	0°C ~ 50°C, 10% ~ 90% Humidity	

D1 DVR's 16CH Real-Time

SA-16400HD (1U)

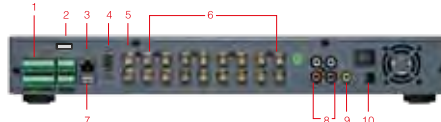


■ Front Panel



- 1.Number /CH key
- 2.Function key
- 3.Indicator Leds
- 4.Direction/Multi screen key
- 5.IR receiver
- 6.USB

■ Rear Panel



- 1.RS485\Alarm In / Out
- 2.HDMI
- 3.LAN
- 4.VGA Out
- 5.Video Out(BNCx2)
- 6.Video In(BNCx16)
- 7.USB
- 8.Audio In(RCAx4)
- 9.Audio Out(RCAx1)
- 10.DC12V Socket



Specifications

MODEL	SA-16400HD (1U)	
System	Compression	Standard H.264
	CPU	ARM11 Duo
	OS	Embedded Linux
Video	Input	BNC X16
	Output	BNCx2: Main monitor, Spot monitor / VGAX1: 1280x1024
		VGAX1: 1280x1024
Audio	Input	RCA X4
	Output	RCA X1
	2way audio	Yes
	Frame Rate	PAL 480FPS D1/NTCS 400FPS D1
Record	Resolution	D1/CIF, 704x576/352x288 (PAL), 704x480/352x240 (NTSC)
	Bitrate	128k~2Mbps
	Encode	VBR/CBR
	Quality	5 Level
	Mode	Manual, continuous, motion, sensor
	File	Lock, unlock, reserving time, redundancy
Play back	Playback	4CH
	Search	Time, motion, sensor, single or multi-channel
	Function	Play, pause, FF, FB, Jog; Digital zoom
Alarm	Mode	Sensor, motion, video loss, network status, HDD status
	Input	4CH
	Output	4CH
	Triggering	Record, PTZ move, relay out, E-mail
Network	Interface	RJ45 Giga ethernet
	Protocol	TCP/IP, UDP, DHCP, DNS, PPPOE, DDNS, E-mail
	Function	Full Function
	Others	10 users online, dual stream
Cell phone	OS	Iphone, Blackberry, Andriod, Windows mobile, Symbian
	Function	Multi-channel display, server list, record, playback, PTZ, log
I/O	HDD	SATAx2, 2T per HDD, Support DVD-RW
	RS485 / USB	RS485X2 / USB2.0X2
	IR controller	1
Others	Power supply	AC: 110V/220V
	Dimention	430X400X57mm (WxDxH)
	Work Environment	0°C ~ 50°C, 10% ~ 90% Humidity

D1 DVR's Professional 16CH Real-Time

SA-16400HD (2U)



■ Front Panel



- 1.Number /CH key
- 2.Function key
- 3.Indicator Leds
- 4.Direction
- 5.Multiscreen key
- 6.Playback Control

■ Rear Panel

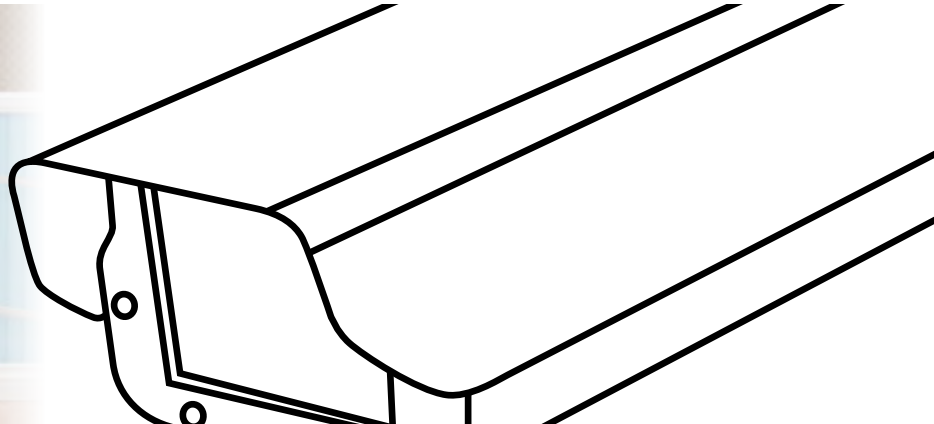
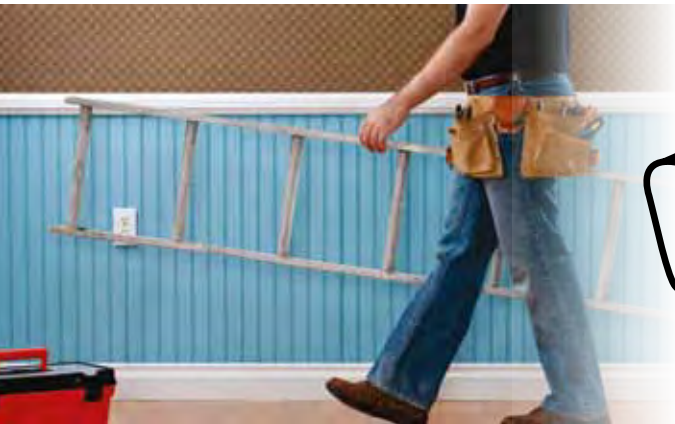


- 1.Video Out(BNCx2)
- 2.Video In(BNCx16)
- 3.Audio Out(RCAx1)
- 4.Audio In(RCAx16)
- 5.RS485
- 6.USB Mouse
- 7.LAN
- 8.VGA Out
- 9.Alarm In/Out
- 10.Power Socket



Specifications

MODEL		SA-16400HD (2U)
System	Compression	Standard H.264
	CPU	ARM11 Duo
	OS	Embedded Linux
Video	Input	BNC X16
	Output	BNCX2: Main monitor, Spot monitor
		VGAX1: 1280x1024
		HDMI: 1080P(1920x1080) (Optional)
Audio	Input	Full Audio RCA X16
		2way audio
	Output	RCA X1
	2way audio	Yes
Record	Frame Rate	PAL 480FPS D1/NTCS 400FPS D1
	Resolution	D1/CIF, 704x576/352x288 (PAL), 704x480/352x240 (NTSC)
	Bitrate	128k~2Mbps
	Encode	VBR/CBR
	Quality	5 Level
	Mode	Manual, continuous, motion, sensor
	File	Lock, unlock, reserving time, redundancy
Play back	Playback	4CH
	Search	Time, motion, sensor, single or multi-channel
	Function	Play, pause, FF, FB, Jog; Digital zoom
Alarm	Mode	Sensor, motion, video loss, network status, HDD status
	Input	16CH
	Output	4CH
	Triggering	Record, PTZ move, relay out, E-mail
Network	Interface	RJ45 Giga ethernet
	Protocol	TCP/IP, UDP, DHCP, DNS, PPPOE, DDNS, E-mail
	Function	Full Function
	Others	10 users online, dual stream
Cell phone	OS	Iphone, Blackberry, Andriod, Windows mobile, Symbian
	Function	Multi-channel display, server list, record, playback, PTZ, log
I/O	HDD	SATAx4, eSATAx1, 2T per HDD, support DVD-RW
	RS485 / USB	RS485X2 / USB2.0X2
	IR controller	1
Others	Power supply	AC: 110V/220V
	Dimention	430X450X89mm (WxDxH)
	Work Environment	0°C ~ 50°C, 10% ~ 90% Humidity



Due to our vision of creating a one stop shop to our clients for the entire range of CCTV products, we have managed to create a full range of CCTV accessories for all types of CCTV installation. We perfectly understand the need for tested and reliable CCTV accessories and set high quality standards to these products as well.



MONITORS

A full range of 7", 9" and 10" LCD monitors for different CCTV needs as Door phone monitor, installers monitor and more. The product range includes standard resolution Analog monitors and high resolution Digital monitors with VGA interface.



POWER SUPPLY

Provision-ISR 9/16 Channel power supply is a dedicated CCTV installation power supply. It was designed purely for CCTV usage based on CCTV needs, this series of products are safer, friendlier and much more efficient.



ACCESSORIES

A full range of CCTV accessories includes cameras housing and brackets, Connectors, UTP Video balun, Multi- Plexer and more...

ACCESORIES MONITORS

7" / 9" / 10" TFT MONITORS



7" SERIES

Features

- 7" TFT-LCD Monitor
- 2 Video In, 1 Audio In
- AV input
- Picture mode: 16:9 / 4:3
- Built In Speakers
- Wall Mount/Table Mount
- Remote Control
- Dimensions:
188Wx131Hx25D mm
- Available in Black/White Colors

Analog Panel
(Resolution: 480 (H) x RGB x 234 (V))

PR-TFT7
Basic



PR-TFT7T
Elegant Buttons



PR-TFT7TQ
Quad Function
Elegant Buttons



Digital Panel
(Resolution: 800 (H) x RGB x 480(V))

PR-TFT7(VGA)
VGA
Connection



PR-TFT7T(VGA)
VGA
Connection
Elegant Buttons



9" SERIES

Features

- 9" TFT-LCD Monitor
- 2 Video In, 1 Audio In
- AV input
- Picture mode: 16:9 / 4:3
- Built In Speakers
- Wall Mount/Table Mount
- Remote Control
- Dimensions:
240Wx163Hx25D mm
- Available in Black/White Colors

Analog Panel
(Resolution: 640(H)xRGBx234(V))

PR-TFT9
Basic



PR-TFT9T
Elegant Buttons



PR-TFT9TQ
Quad Function
Elegant Buttons



Digital Panel
(Resolution: 800(H)xRGBx480(V))

PR-TFT9(VGA)
VGA
Connection



PR-TFT9T(VGA)
VGA Connection
Elegant Buttons



10" SERIES

Features

- 10.2" TFT-LCD Monitor
- 2 Video In, 1 Audio In
- AV input
- Picture mode: 16:9 / 4:3
- Built In Speakers
- Wall Mount/Table Mount
- Remote Control
- Dimensions:
267Wx187Hx23D mm
- Available in Black/White Colors

Digital Panel
(Resolution: 1024(H)xRGBx600(V))

PR-TFT10T
Elegant Buttons



PR-TFT10TQ
Quad Function
Elegant Buttons



PR-TFT10T(VGA)
VGA Connection
Elegant Buttons



ACCESORIES POWER SUPPLY

9Ch/16Ch Power Supply

Features

- High efficiency and environmental friendly design
- Optimal design for easy installation
- Extra stable power signal to support clear images
- Over-current protection
- Output over-voltage protection
- Short circuit protection

MODEL	PR-10A9CH	PR-12A16CH
Description	DC12V 10Amp 9way cctv Power Supply	DC12V 12Amp 16way cctv power supply
Input Voltage	AC100-240V	AC100-240V
Frequency	50-60HZ	50-60HZ
Output Voltage	DC12V	DC12V
Output Current	10Amp	12Amp
Output Volt-Regulation Precion	DC12-14V	DC12-14V
Over Current Protection	11A \pm 5%	14A \pm 5%
Ripple & Noise	\leq 50MA	\leq 50MA
Efficiency	\geq 85%	\geq 85%
Dimensions	200 x 202 x 50mm	205 x 305 x 50mm
Weight	1.4 Kg	2.2 Kg

PR-10A9CH

- 9CH
- DC12V
- 10 Amp



PR-12A16CH

- 16CH
- DC12V
- 12 Amp



Indicator LED

Protection Lock



110V-220V
Selectable

Voltage
Adjustment

Auto-recovery
Fuse

1 part PCB



ACCESSORIES

Accessories for CCTV



Housing

■ CCTV Camera Housing



Brackets

■ Universal camera brackets



Connectors

■ Connectors for carrying audio, video
and power



UTP Baluns

■ Video Transmission
■ Power Transmission
■ Data Transmission



Multiplexers

■ 4/8/16 Multiplexers

MODEL KEY

CATEGORY	SUB CATEGORY	CCD SIZE	TVL	LUX	COMPONENT TYPE	CCD TYPE	LENS
X	X	O	O	O	X	X	OO
Example I	V	-	3	2	C	S	36
D	X	-	4	2	C	P	36

Category

Symbol	Description
B	Body
D	Dome
M	Mini
I	Infra
C	Card
PI	Indoor PTZ
PZ	Outdoor PTZ

LUX

Symbol	Description
1	Below~0.009
2	0.01~0.1
3	0.11~0.3
4	0.4
5	0.5
8	0.8
9	1

Sub-Category

Symbol	Description
X	No subcategory
I	Infra Red (IR)
C	Pinhole cone shape
A	Anti Vandal
Z	Zoom
S	Smoke detector
V	Volume detector
F	Fire sprinkler
L	Spotlight shape
P	Pipe
D	Door
W	Wire
1	IR 10-20m
2	IR 20-30m
3	IR 30-40m
4	IR 40-50m

Component Type

Symbol	Description
C	Color CCD
M	Cmos
B	B/W CCD
UV	UltraVision

CCD Type

Symbol	Description
S	Sony
X	Sony ex-view
P	Sharp

CCD Size

Symbol	Description
2	1/2"
3	1/3"
4	1/4"

TVL

Symbol	Description
1	380 TVL
2	420 TVL
3	480 TVL
4	520 TVL
5	540 TVL
6	600 TVL
7	650TVL

Lens

Symbol	Description
25	2.5mm
36	3.6mm
04	4mm
43	4.3mm
06	6mm
08	8mm
12	12mm
16	16mm
VF	Vari-focal
AS	Auto Sync. Focus



Now you can see!

Headquarters Offices:

11 Atir Yeda st. Kfar Saba, Israel

Postal Code: 44425

Tel: (972-9) 7417511

Fax: (972-9) 7457182


Operational Offices:


202 Hai Yang building, Hai Bin Garden.
Shekou Guangdong PR,
Shenzhen China.


Postal Code: 518067

Tel: (86) 755 26861420

 **Website:** www.provision-isr.com

 **E-mail:** sales@provision-isr.com

 **MSN:** sales@provision-isr.com

 **Skype:** provision-isr

